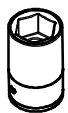


NISSAN NAVARA 2016

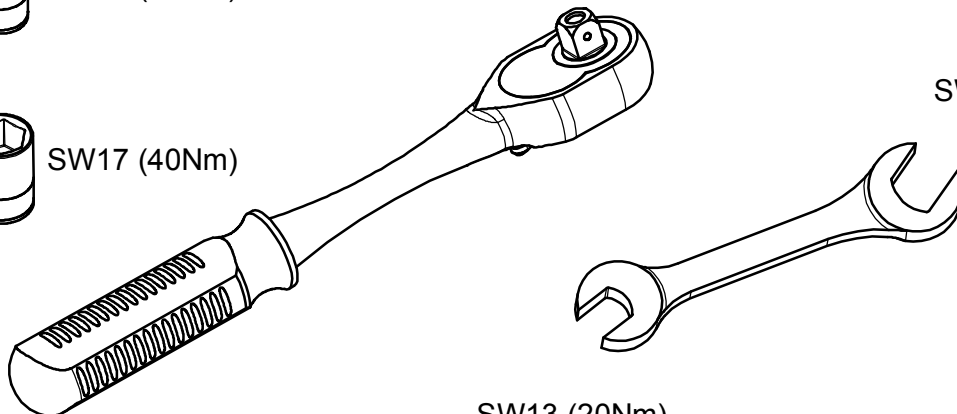
KOD / CODE : 5026ÖKP176



SW13 (20Nm)

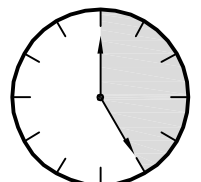


SW17 (40Nm)



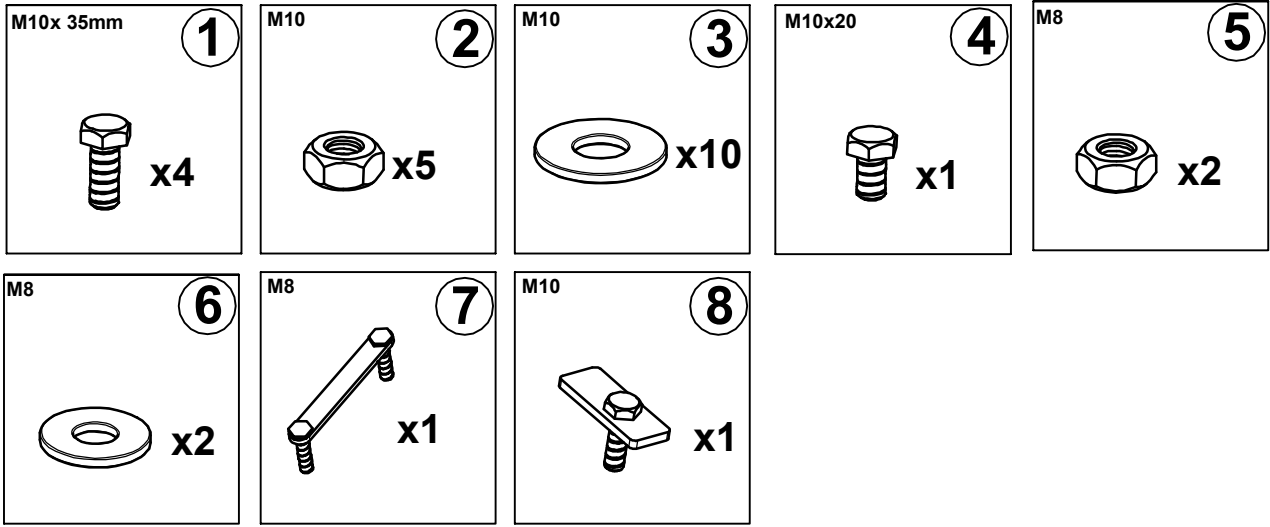
SW17 (40Nm)

SW13 (20Nm)

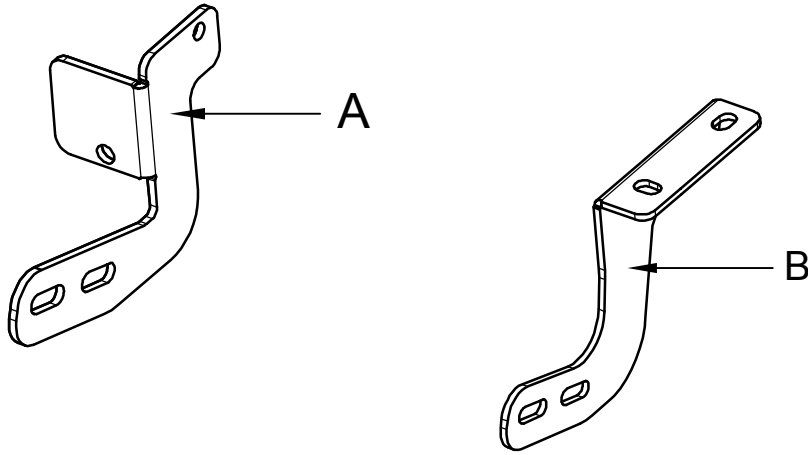


25 DAKİKA

MONTAJ SETİ / INSTALLATION SET



1. M10x35mm CİVATA / M10x35mm BOLT
2. M10 SOMUN / M10 NUT
3. M10 PUL / M10 WASHER
4. M10x20mm CİVATA / M10x20mm BOLT
5. M8 SOMUN / M8 NUT
6. M8 PUL / M8 WASHER
7. M8 LAMALI CİVATA / M8 MOUNTING PLATE
8. M10 LAMALI CİVATA / M10 MOUNTING PLATE



BRAKETLER / BRACKETS

- A. 5026ÖKP R F / SAĞ ÖN BRAKET / RIGHT FRONT BRACKET
- B. 5026ÖKP L F / SOL ÖN BRAKET / LEFT FRONT BRACKET

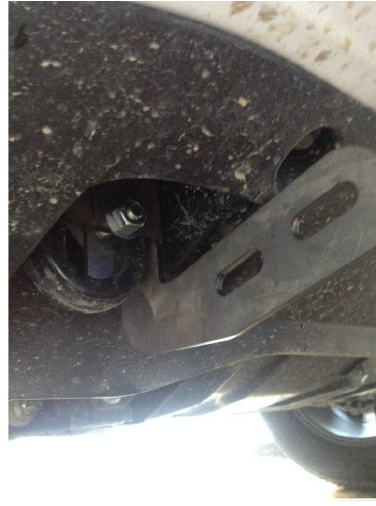
Fig. 1



ARAÇ ÜZERİNDEKİ PLASTİK KAPAĞI KESİNİZ

PLEASE REMOVE THE STOPPER THAT ALREADY ATTACHED ON THE VEHICLE

Fig. 4



ARAÇ ÜZERİNDEKİ PLASTİK KAPAĞI SÖKÜNÜZ

PLEASE REMOVE THE STOPPER THAT ALREADY ATTACHED ON THE VEHICLE

Fig. 2



BRAKETİ CİVATALAR İLE MONTAJLAYINIZ

INSTALL THE BRACKET WITH BOLTS

Fig. 5



BRAKETİ CİVATALAR İLE MONTAJLAYINIZ

INSTALL THE BRACKET WITH BOLTS

Fig. 3



ÜRÜNÜ MONTAJLAYINIZ

PLEASE INSTALL THE PRODUCT

Fig. 6



ÜRÜNÜ MONTAJLAYINIZ

PLEASE INSTALL THE PRODUCT



MONTAJ ŞEMASI / INSTALLATION SCHEME

