

# VOLKSWAGEN AMAROK 2010>

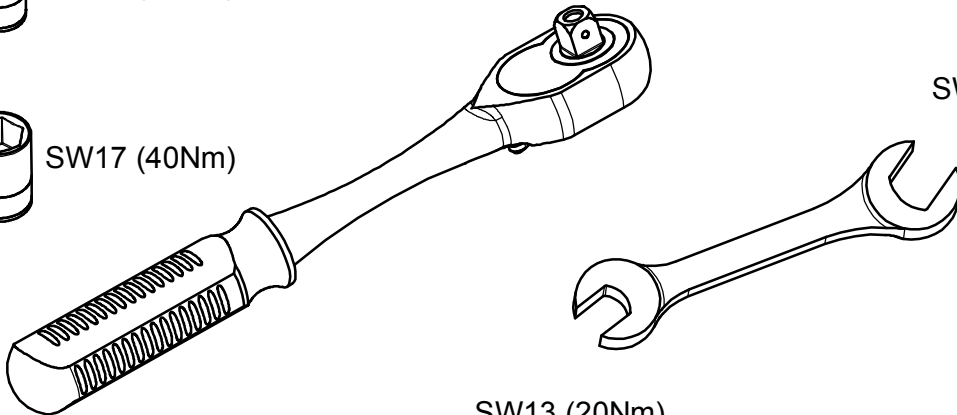
KOD / CODE : 7535YBA



SW13 (20Nm)

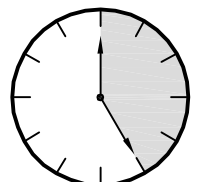


SW17 (40Nm)



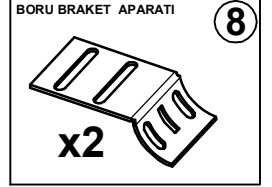
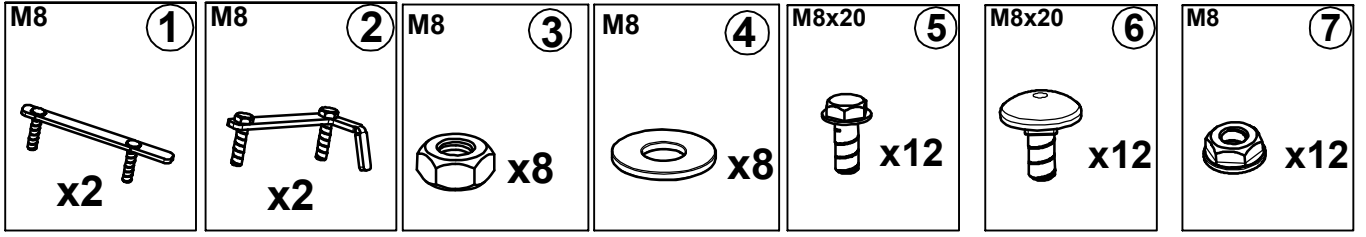
SW17 (40Nm)

SW13 (20Nm)

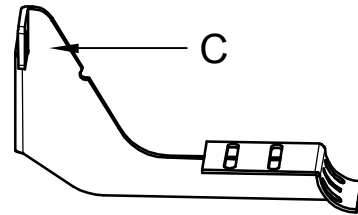
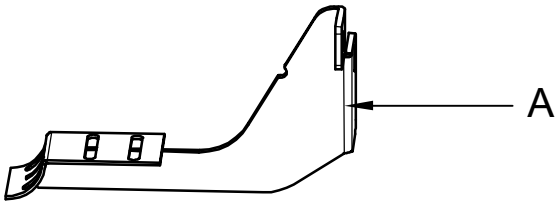
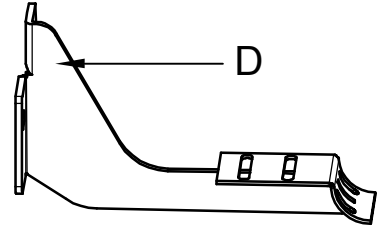
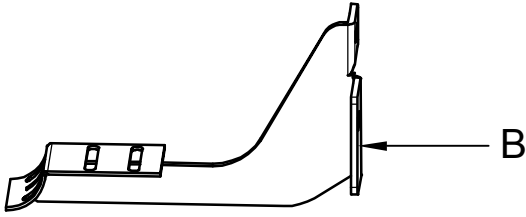


25 DAKİKA

# MONTAJ SETİ / INSTALLATION SET



1. M8 LAMALI CİVATA / M8 MOUNTING PLATE
2. M8 LAMALI CİVATA / M8 MOUNTING PLATE
3. M8 SOMUN / M8 NUT
4. M8 PUL / M8 WASHER
5. M8x20 CİVATA / M8x20 BOLT
6. M8x20 CİVATA / M8x20 BOLT
7. M8 SOMUN / M8 NUT
8. BRAKET APARAT / BRACKET APPARATUS



## **BRAKETLER / BRACKETS**

- A. 7535YBA R F / SAĞ ÖN BRAKET / RIGHT FRONT BRACKET
- B. 7535YBA R R / SAĞ ARKA BRAKET / RIGHT REAR BRACKET
- C. 7535YBA L F / SOL ÖN BRAKET / LEFT FRONT BRACKET
- D. 7535YBA L R / SOL ARKA BRAKET / LEFT REAR BRACKET

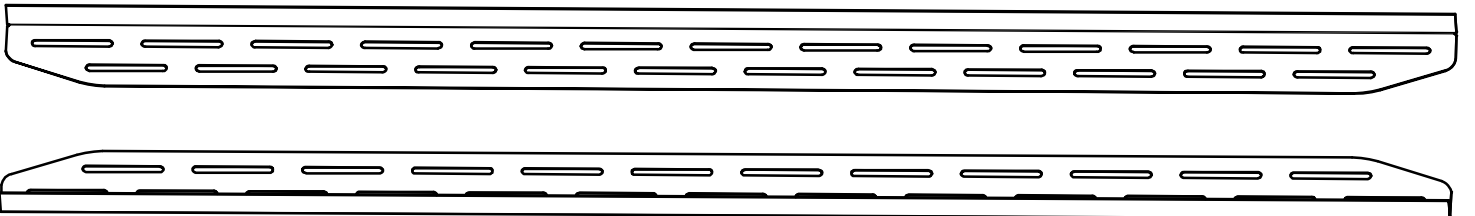




Fig. 1



RR



ARAÇ ÜZERİNDEKİ PLASTİK KAPAĞI SÖKÜNÜZ  
PLEASE REMOVE THE STOPPER THAT ALREADY  
ATTACHED ON THE VEHICLE



Fig. 5



RF



ARAÇ ÜZERİNDEKİ PLASTİK KAPAĞI SÖKÜNÜZ  
PLEASE REMOVE THE STOPPER THAT ALREADY  
ATTACHED ON THE VEHICLE

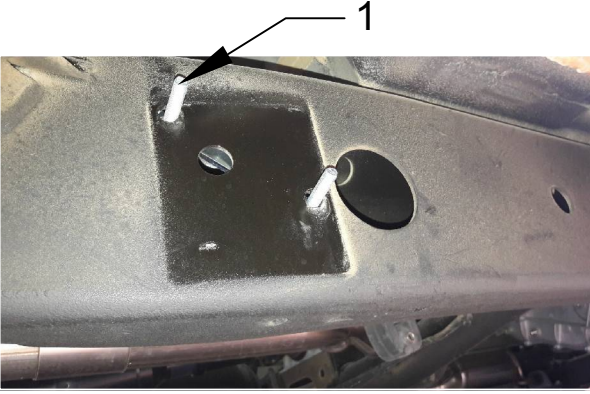


Fig. 2



RR

1 NUMARALI PARÇAYI YERİNE TAKINIZ  
PLEASE ATTACH THE PART (PART NO 1)  
TO THE PLACE SHOWN ABOVE

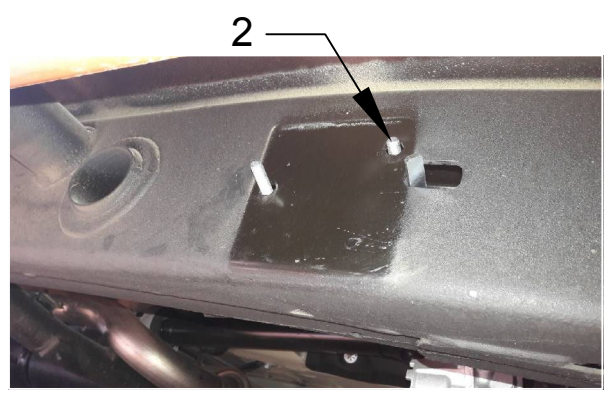


Fig. 6



RF

2 NUMARALI PARÇAYI YERİNE TAKINIZ  
PLEASE ATTACH THE PART (PART NO 2)  
TO THE PLACE SHOWN ABOVE



Fig. 3



RR

BRAKETİ CİVATALAR İLE MONTAJLAYINIZ  
INSTALL THE BRACKET WITH BOLTS

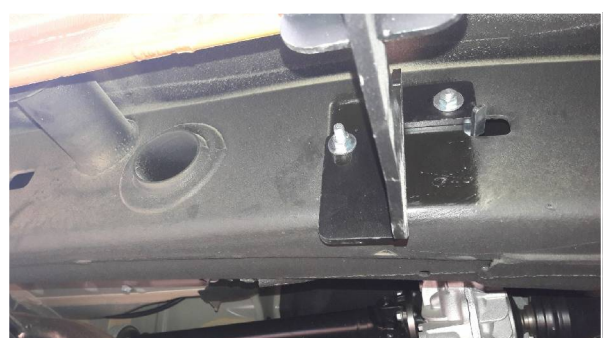


Fig. 7



RF

BRAKETİ CİVATALAR İLE MONTAJLAYINIZ  
INSTALL THE BRACKET WITH BOLTS



Fig. 4

BRAKETİ CİVATALAR İLE MONTAJLAYINIZ  
INSTALL THE BRACKET WITH BOLTS

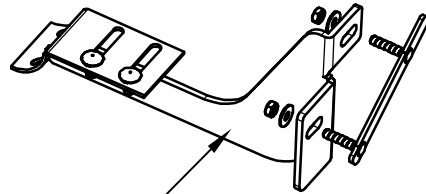


Fig. 8

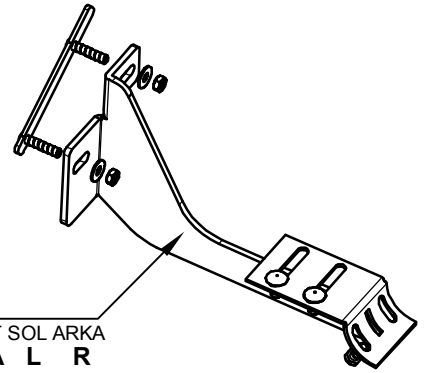
ÜRÜNÜ MONTAJLAYINIZ  
PLEASE INSTALL THE PRODUCT



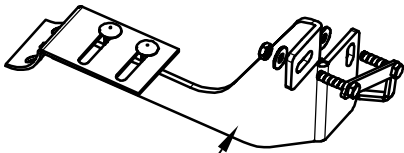
## MONTAJ ŞEMASI / INSTALLATION SCHEME



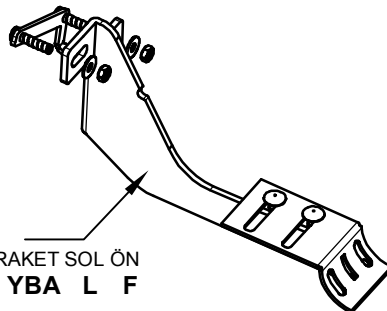
7535 YBA R R  
BRAKET SAĞ ARKA



BRAKET SOL ARKA  
7535 YBA L R



7535 YBA R F  
BRAKET SAĞ ÖN



BRAKET SOL ÖN  
7535 YBA L F