

TOYOTA HILUX 2014>

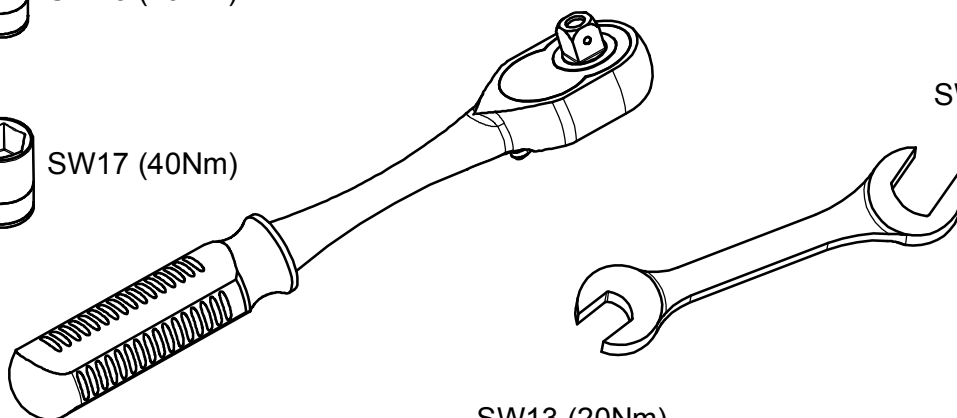
KOD / CODE : 7025YBA176



SW13 (20Nm)

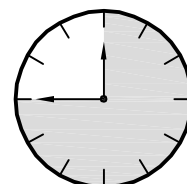


SW17 (40Nm)



SW17 (40Nm)

SW13 (20Nm)

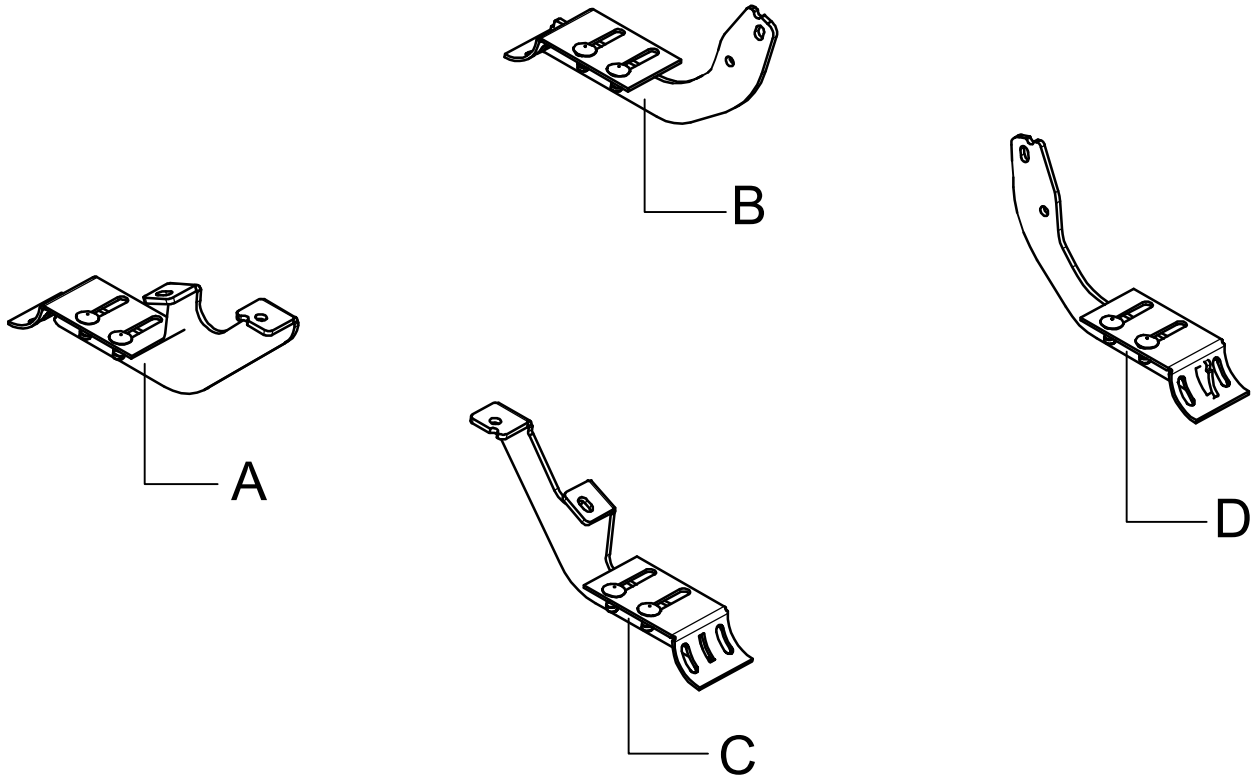


45 Min.

MONTAJ SETİ / INSTALLATION SET

M8x20 ① x2	M8 ② x2	M8 ③ x4	M8x20 ④ x12	M8x20 ⑤ x12	M8 ⑥ x12
---------------	------------	------------	----------------	----------------	-------------

1. M8x20 ANAHTAR BAŞLI CİVATA / M8x20 KEY HEAD BOLT
2. M8 SOMUN / M8 NUT
3. M8 PUL / M8 WASHER
4. M8x20 CİVATA / M8x20 BOLT
5. M8x20 CİVATA / M8x20 BOLT
6. M8 SOMUN / M8 NUT



BRAKETLER / BRACKETS

- A. 7025YBA R F / SAĞ ÖN BRAKET / RIGHT FRONT BRACKET
- B. 7025YBA R R / SAĞ ARKA BRAKET / RIGHT REAR BRACKET
- C. 7025YBA L F / SOL ÖN BRAKET / LEFT FRONT BRACKET
- D. 7025YBA L R / SOL ARKA BRAKET / LEFT REAR BRACKET

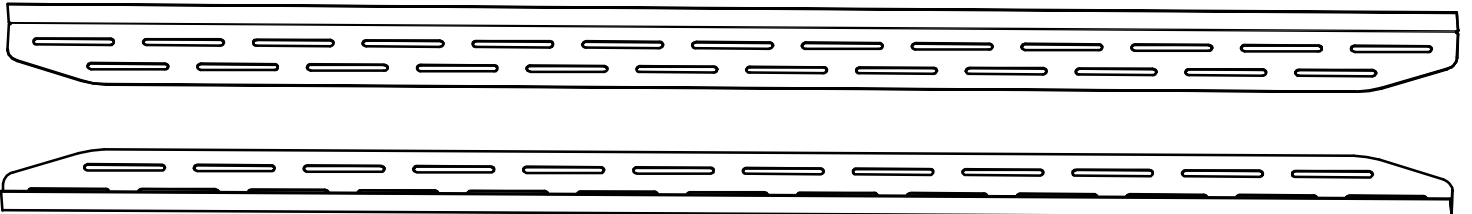


Fig. 1



ARAÇ ÜZERİNDEKİ CİVATALARI SÖKÜNÜZ
REMOVE THE BOLTS ON THE VEHICLE

▲
LF

Fig. 4



BRAKETİ CİVATALAR İLE MONTAJLAYINIZ
INSTALL THE BRACKET WITH BOLTS

Fig. 2



BRAKETİ CİVATALAR İLE MONTAJLAYINIZ
INSTALL THE BRACKET WITH BOLTS

▲
LF

Fig. 5



BRAKETİ CİVATALAR İLE MONTAJLAYINIZ
INSTALL THE BRACKET WITH BOLTS

▲
LR

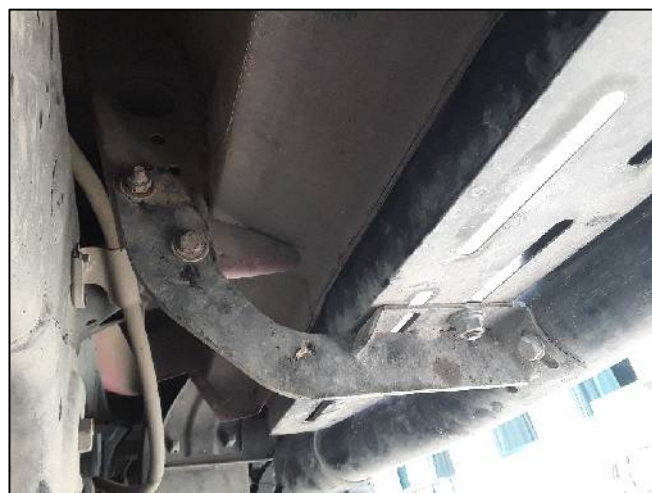
Fig. 3



BRAKETİ CİVATALAR İLE MONTAJLAYINIZ
INSTALL THE BRACKET WITH BOLTS

▲
LF

Fig. 6



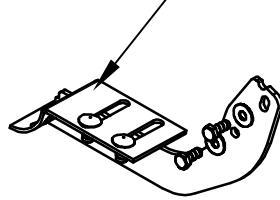
BRAKETİ CİVATALAR İLE MONTAJLAYINIZ
INSTALL THE BRACKET WITH BOLTS

▲
LR

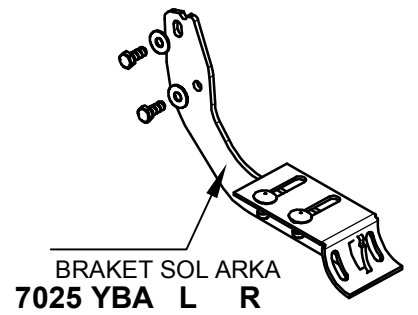
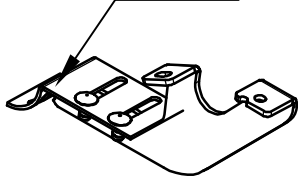


MONTAJ ŞEMASI / INSTALLATION SCHEME

7025 YBA R R
BRAKET SAĞ ARKA



7025 YBA R F
BRAKET SAĞ ÖN



BRAKET SOL ARKA
7025 YBA L R



BRAKET SOL ÖN
7025 YBA L F

