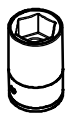
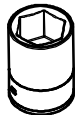


# FORD RANGER 2012>

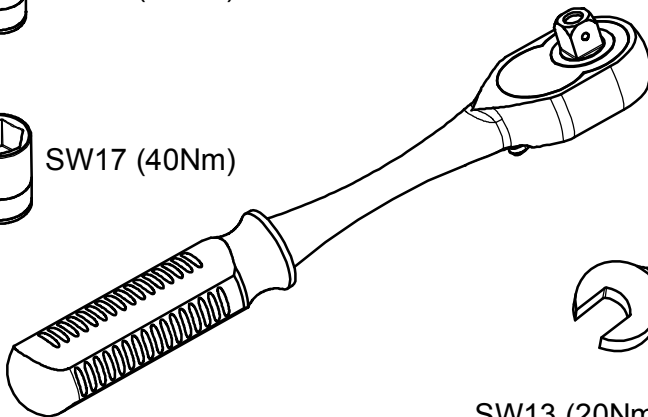
KOD / CODE : 2617YBA176



SW13 (20Nm)

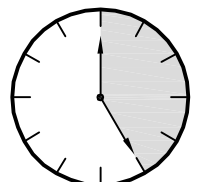
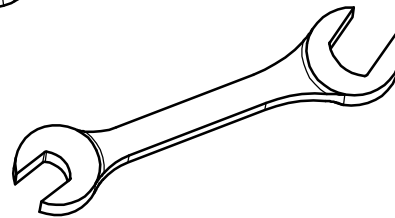


SW17 (40Nm)



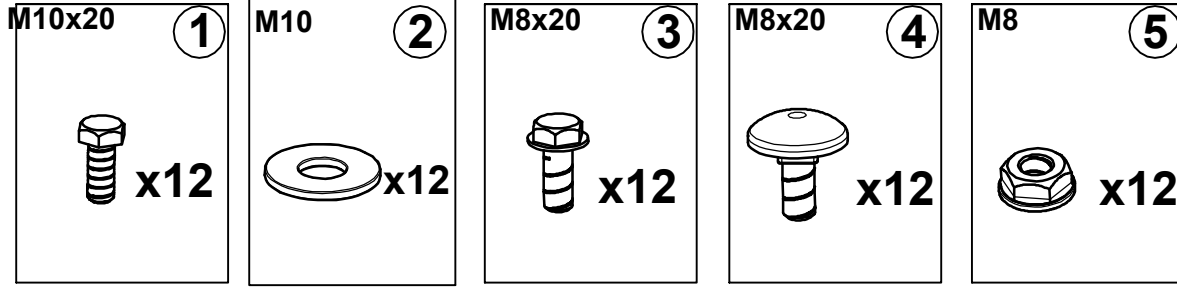
SW13 (20Nm)

SW17 (40Nm)

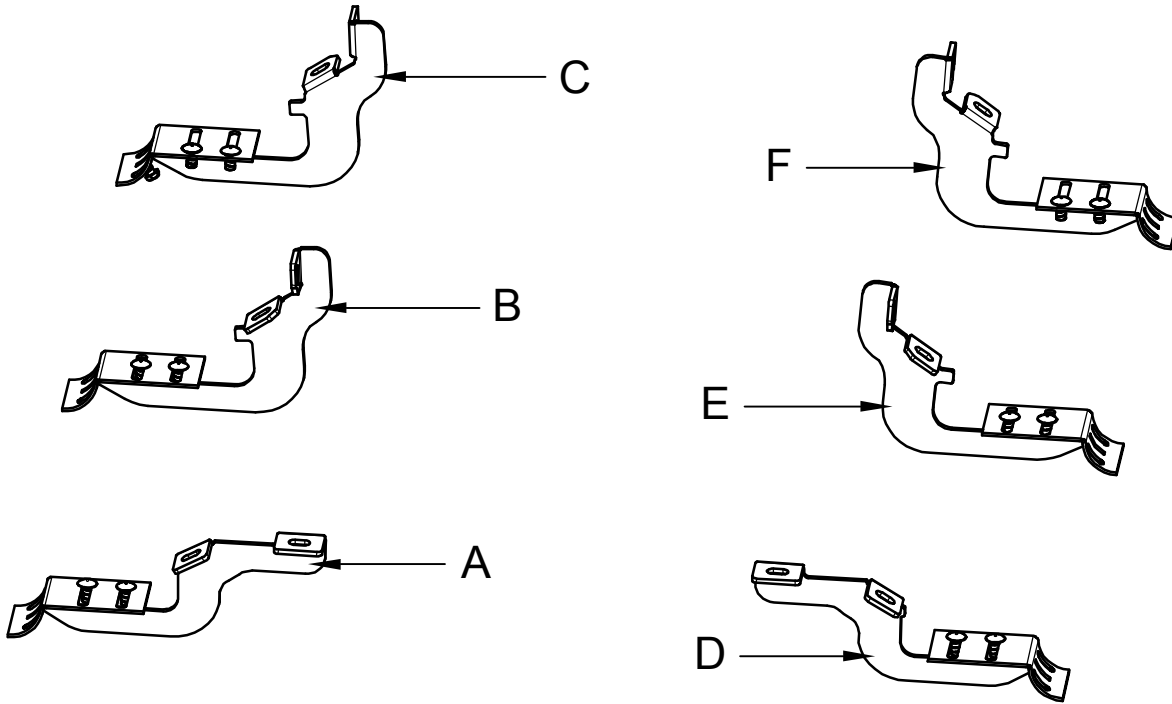


25 DAKIKA

# MONTAJ SETİ / INSTALLATION SET



1. M8x20 CİVATA / M8x20 BOLT
2. M8 PUL / M8 WASHER
3. M8x20 CİVATA / M8x20 BOLT
4. M8x20 CİVATA / M8x20 BOLT
5. M8 SOMUN / M8 NUT



## **BRAKETLER / BRACKETS**

- A. 2617YBA R F / SAĞ ÖN BRAKET / RIGHT FRONT BRACKET
- B. 2617YBA R M / SAĞ ORTA BRAKET / RIGHT MIDDLE BRACKET
- C. 2617YBA R R / SAĞ ARKA BRAKET / RIGHT ARKA BRACKET
- D. 2617YBA L R / SOL ÖN BRAKET / LEFT FRONT BRACKET
- E. 2617YBA L F / SOL ORTA BRAKET / LEFT MIDDLE BRACKET
- F. 2617YBA L R / SOL ARKA BRAKET / LEFT REAR BRACKET

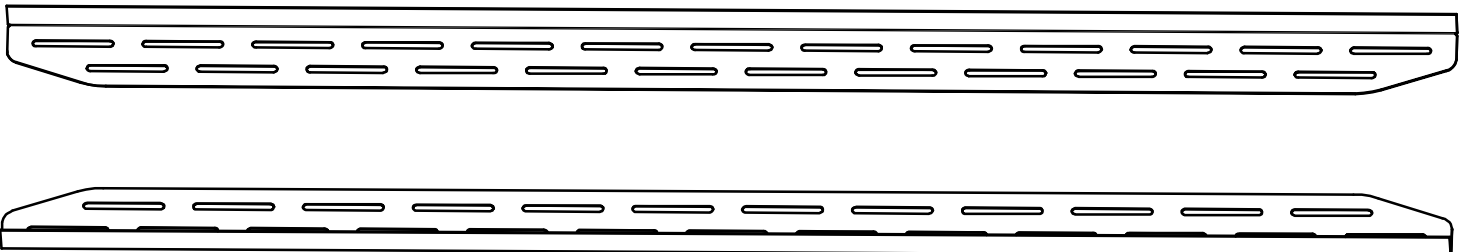


Fig. 1



ARAÇ ÜZERİNDEKİ CİVATALARI SÖKÜNÜZ

REMOVE THE BOLT ON THE VEHICLE



**RF**

Fig. 4



BRAKETİ CİVATALAR İLE MONTAJLAYINIZ

INSTALL THE BRACKET WITH BOLTS



**RM**

Fig. 2



BRAKETİ CİVATALAR İLE MONTAJLAYINIZ

INSTALL THE BRACKET WITH BOLTS



**RF**

Fig. 5



ARAÇ ÜZERİNDEKİ CİVATALARI SÖKÜNÜZ

REMOVE THE BOLT ON THE VEHICLE



**RR**

Fig. 3



ARAÇ ÜZERİNDEKİ CİVATALARI SÖKÜNÜZ

REMOVE THE BOLT ON THE VEHICLE



**RM**

Fig. 6



BRAKETİ CİVATALAR İLE MONTAJLAYINIZ

INSTALL THE BRACKET WITH BOLTS



**RR**



## MONTAJ ŞEMASI / INSTALLATION SCHEME

