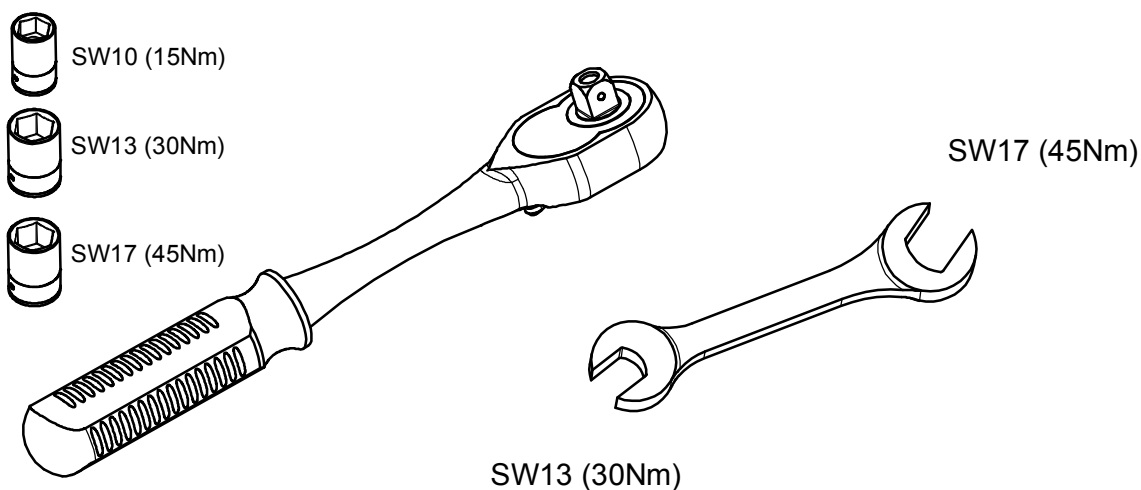
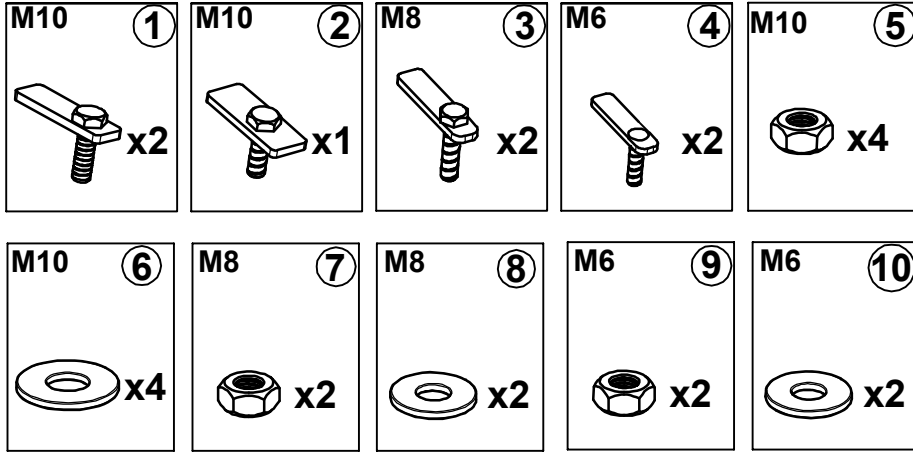


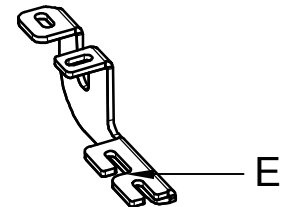
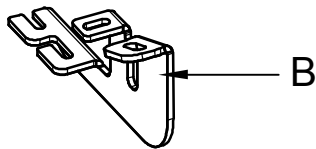
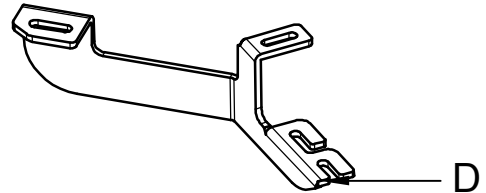
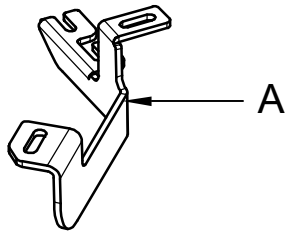
# VW TRANSPORTER 2003> CARAVELLE 2003> KOD / CODE : 7550BRK183



# MONTAJ SETİ / INSTALLATION SET



1. M10 LAMALI CİVATA / M10 MOUNTING PLATE
2. M10 LAMALI CİVATA / M10 MOUNTING PLATE
3. M8 LAMALI CİVATA / M8 MOUNTING PLATE
4. M6 LAMALI CİVATA / M6 MOUNTING PLATE
5. M10 SOMUN / M10 NUT
6. M10 PUL / M10 WASHER
7. M8 SOMUN / M8 NUT
8. M8 PUL / M8 WASHER
9. M6 SOMUN / M6 NUT
10. M6 PUL / M6 WASHER



## **BRAKETLER / BRACKETS**

- A. 7522BRK R F / SAĞ ÖN BRAKET / RIGHT FRONT BRACKET
- B. 7522BRK R M / SAĞ ORTA BRAKET / RIGHT MIDDLE BRACKET
- C. 7522BRK L F / SOL ÖN BRAKET / LEFT FRONT BRACKET
- D. 7522BRK L M / SOL ORTA BRAKET / LEFT MIDDLE BRACKET



Fig. 1

RF



ARAÇ ÜZERİNDEKİ PLASTİK KAPAĞI SÖKÜNÜZ

PLEASE REMOVE THE STOPPER THAT ALREADY ATTACHED ON THE VEHICLE



Fig. 5

RM

MONTAJDAN ÖNCE KESİLECEK YERLER  
PLACES TO BE CUT BEFORE INSTALLATION

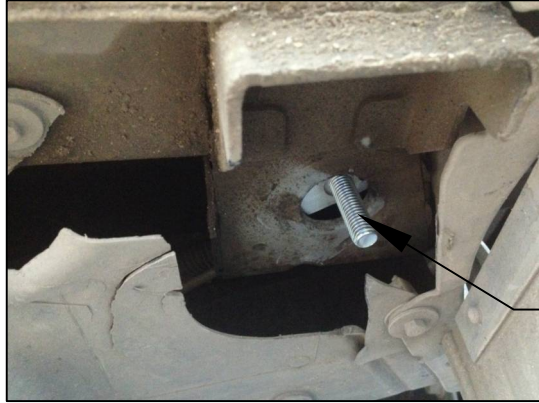


Fig. 2

RF

1

1 NUMARALI PARÇAYI YERİNE TAKINIZ

PLEASE ATTACH THE PART (PART NO 1) TO THE PLACE SHOWN ABOVE

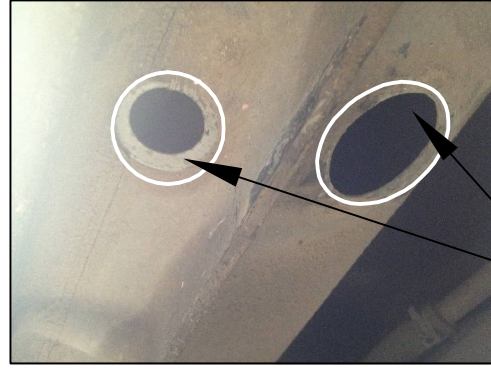


Fig. 6

RM

ARAÇ ÜZERİNDEKİ PLASTİK KAPAĞI SÖKÜNÜZ

PLEASE REMOVE THE STOPPER THAT ALREADY ATTACHED ON THE VEHICLE



Fig. 3

RF

4

4 NUMARALI PARÇAYI YERİNE TAKINIZ

PLEASE ATTACH THE PART (PART NO 4) TO THE PLACE SHOWN ABOVE

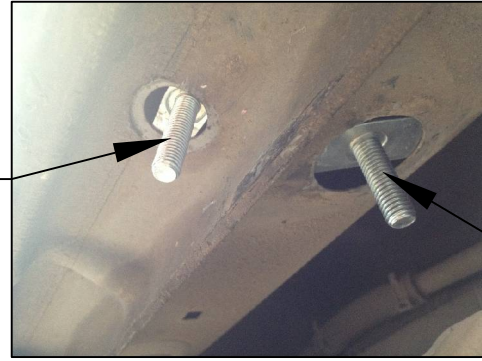


Fig. 7

RM

1

1 ve 3 NUMARALI PARÇAYI YERİNE TAKINIZ

PLEASE ATTACH THE PART (PART NO 1-3) TO THE PLACE SHOWN ABOVE



Fig. 4

RF

BRAKETİ CİVATALAR İLE MONTAJLAYINIZ

INSTALL THE BRACKET WITH BOLTS



Fig. 8

RM

BRAKETİ CİVATALAR İLE MONTAJLAYINIZ

INSTALL THE BRACKET WITH BOLTS



## MONTAJ ŞEMASI / INSTALLATION SCHEME

