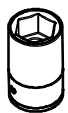


TOYOTA HILUX 2014>

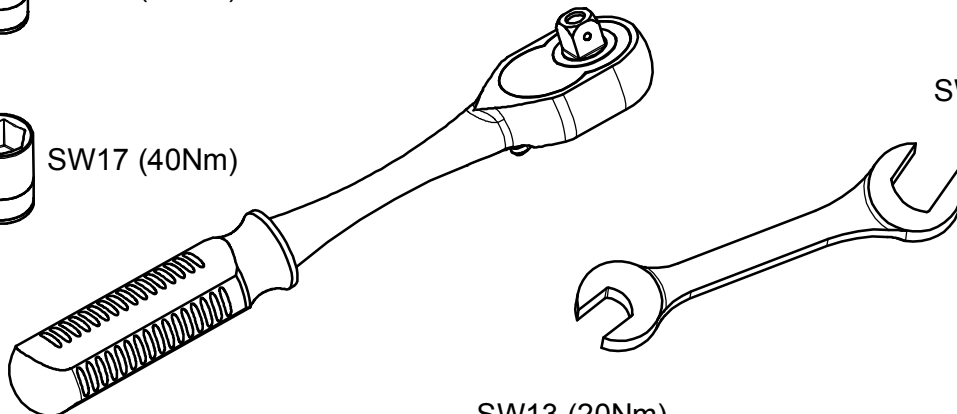
KOD / CODE : 7025BRK193



SW13 (20Nm)

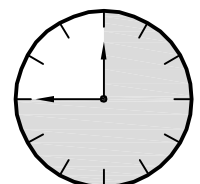


SW17 (40Nm)



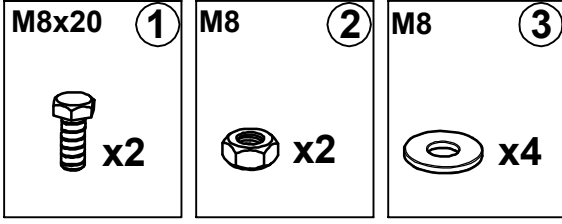
SW17 (40Nm)

SW13 (20Nm)



45 Min.

MONTAJ SETİ / INSTALLATION SET



1. M8x20 ANAHTAR BAŞLI CİVATA / M8x20 KEY HEAD BOLT
2. M8 SOMUN / M8 NUT
3. M8 PUL / M8 WASHER

BRAKETLER / BRACKETS

- A. 7025BRK R F / SAĞ ÖN BRAKET / RIGHT FRONT BRACKET
- B. 7025BRK R M / SAĞ ORTA BRAKET / RIGHT MIDDLE BRACKET
- C. 7025BRK R R / SAĞ ARKA BRAKET / RIGHT REAR BRACKET
- D. 7025BRK L F / SOL ÖN BRAKET / LEFT FRONT BRACKET
- E. 7025BRK L M / SOL ORTA BRAKET / LEFT MIDDLE BRACKET
- F. 7025BRK L R / SOL ARKA BRAKET / LEFT REAR BRACKET

MONTAJ ŞEMASI / INSTALLATION SCHEME

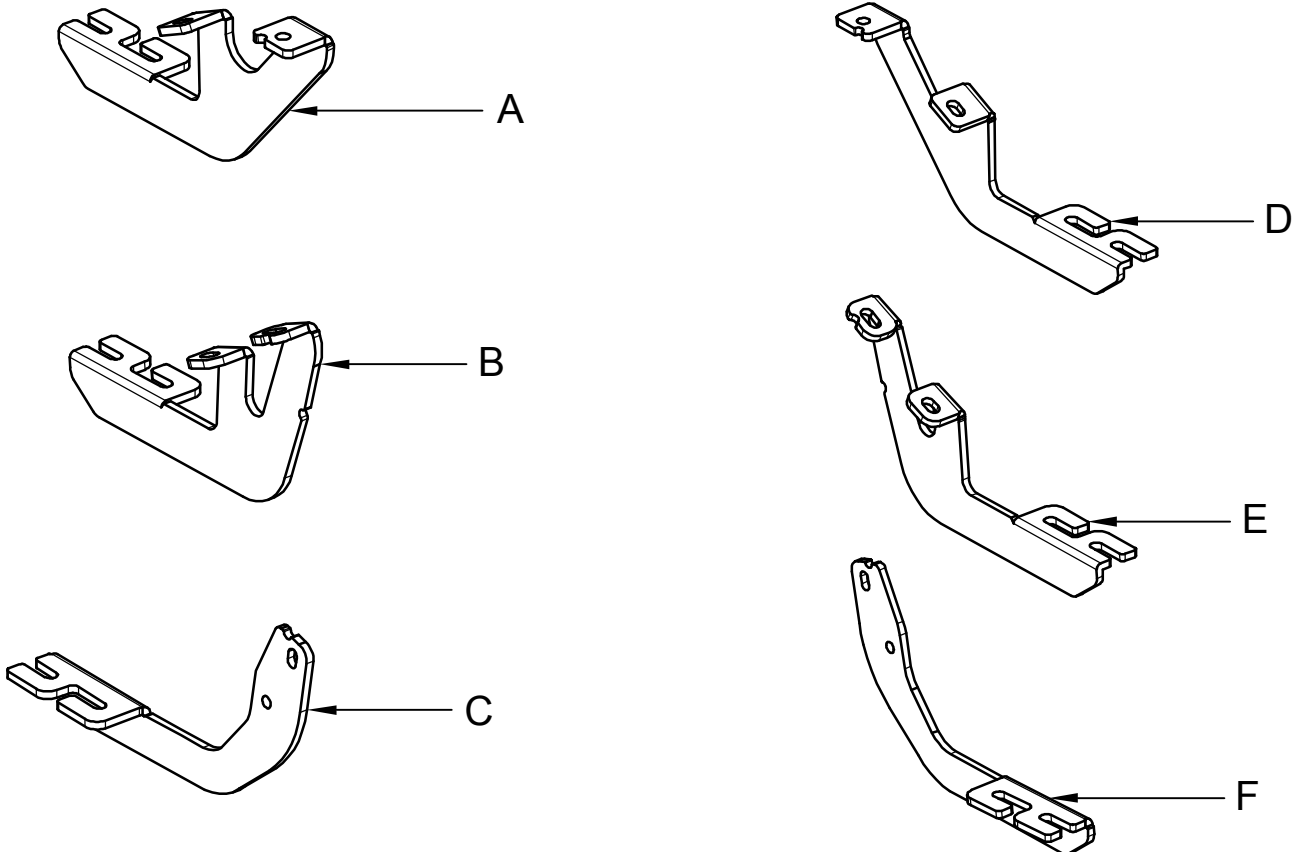


Fig. 1



ARAÇ ÜZERİNDEKİ CİVATALARI SÖKÜNÜZ
REMOVE THE BOLTS ON THE VEHICLE



LF

Fig. 4



BRAKETİ CİVATALAR İLE MONTAJLAYINIZ
INSTALL THE BRACKET WITH BOLTS



LM

Fig. 2



BRAKETİ CİVATALAR İLE MONTAJLAYINIZ
INSTALL THE BRACKET WITH BOLTS



LF

Fig. 5

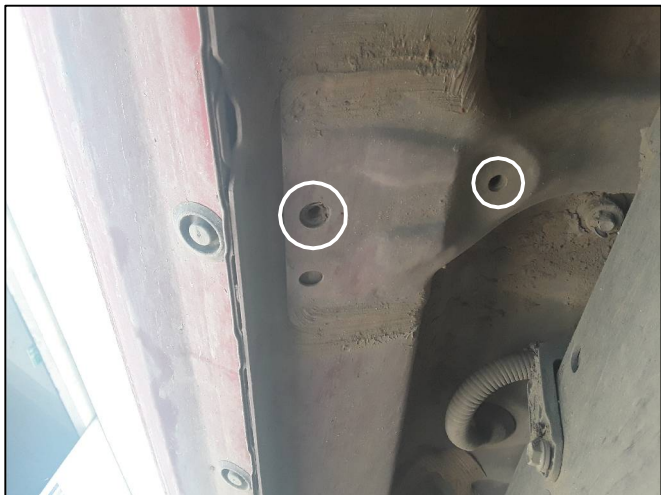


ARAÇ ÜZERİNDEKİ TAPAYI SÖKÜNÜZ
PLEASE REMOVE THE STOPPER THAT
ALREADY ATTACHED ON THE VEHICLE



LR

Fig. 3

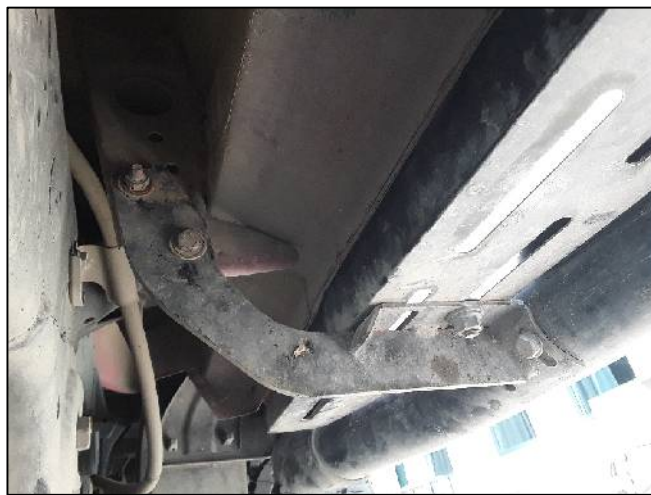


ARAÇ ÜZERİNDEKİ CİVATALARI SÖKÜNÜZ
REMOVE THE BOLTS ON THE VEHICLE



LM

Fig. 6



BRAKETİ CİVATALAR İLE MONTAJLAYINIZ
INSTALL THE BRACKET WITH BOLTS



LR



MONTAJ ŞEMASI / INSTALLATION SCHEME

