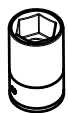


RENAULT KANGOO 1997-2007

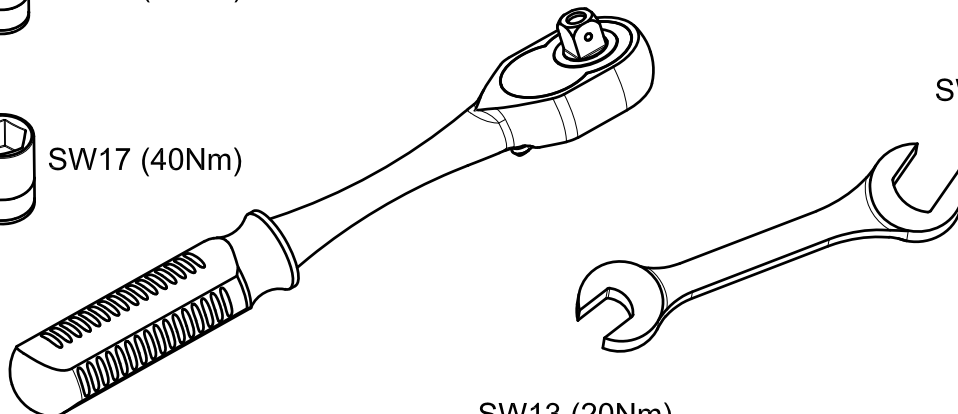
KOD / CODE : 6120BRK183



SW13 (20Nm)

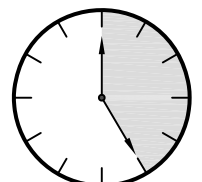
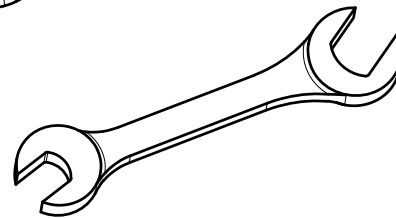


SW17 (40Nm)



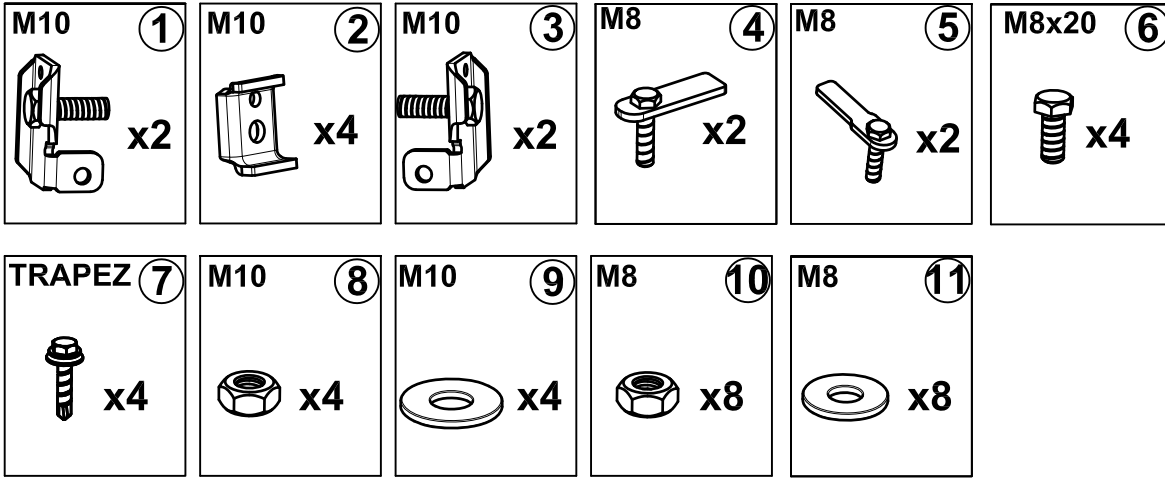
SW13 (20Nm)

SW17 (40Nm)

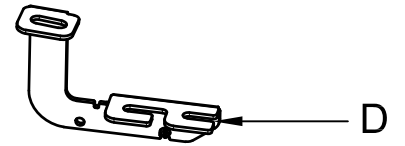
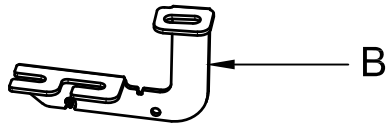
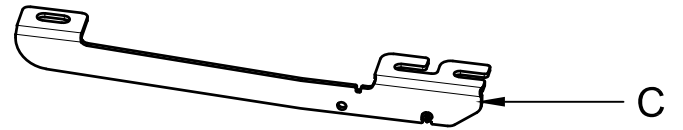


25 DAKIKA

MONTAJ SETİ / INSTALLATION SET



1. ETEK BAĞLANTI SAĞ / SKIRT RING
2. ETEK SIKMA / SKIRTING
3. ETEK BAĞLANTI SOL / SKIRT RING
4. M8 LAMALI CİVATA / M10 MOUNTING PLATE
5. M8 LAMALI CİVATA / M10 MOUNTING PLATE
6. M8x20 ANAHTAR BAŞLI CİVATA / M8x20 KEY HEAD BOLT
7. TRAPEZ VİDA / TRAPEZE SCREW
8. M10 SOMUN / M10 NUT
9. M10 PUL / M10 WASHER
10. M8 SOMUN / M8 NUT
11. M8 PUL / M8 WASHER



BRAKETLER / BRACKETS

- A. 6120BRK R F / SAĞ ÖN BRAKET / RIGHT FRONT BRACKET
- B. 6120BRK R R / SAĞ ARKA BRAKET / RIGHT REAR BRACKET
- C. 6120BRK L F / SOL ÖN BRAKET / LEFT FRONT BRACKET
- D. 6120BRK L R / SOL ARKA BRAKET / LEFT REAR BRACKET



Fig. 1



RF

ARAÇ ÜZERİNDEKİ PLASTİK KAPAĞI SÖKÜNÜZ

PLEASE REMOVE THE STOPPER THAT ALREADY ATTACHED ON THE VEHICLE

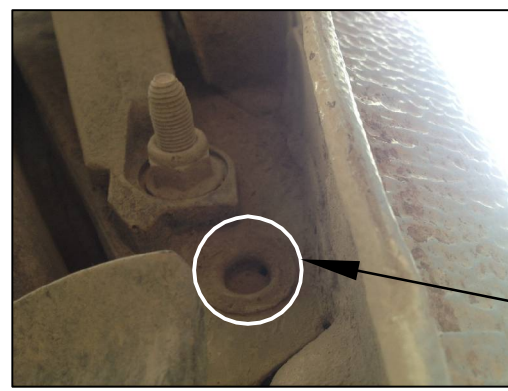


Fig. 5



RR

ARAÇ ÜZERİNDEKİ PLASTİK MUHAFAFAYI SÖKÜNÜZ

PLEASE REMOVE THE STOPPER THAT ALREADY ATTACHED ON THE VEHICLE



Fig. 2



RF

ARAÇ ÜZERİNDEKİ PLASTİK KAPAĞI SÖKÜNÜZ

PLEASE REMOVE THE STOPPER THAT ALREADY ATTACHED ON THE VEHICLE



Fig.



RR

7 NUMARALI PARÇAYI YERİNE TAKINIZ

PLEASE ATTACH THE PART (PART NO 7) TO THE PLACE SHOWN ABOVE



Fig. 3



RF

4 NUMARALI PARÇAYI YERİNE TAKINIZ

PLEASE ATTACH THE PART (PART NO 4) TO THE PLACE SHOWN ABOVE



Fig. 7



RR

1 NUMARALI PARÇAYI YERİNE TAKINIZ

PLEASE ATTACH THE PART (PART NO 4) TO THE PLACE SHOWN ABOVE



Fig. 4



RF

BRAKETİ CİVATALAR İLE MONTAJLAYINIZ

INSTALL THE BRACKET WITH BOLTS



Fig. 8



RR

BRAKETİ CİVATALAR İLE MONTAJLAYINIZ

INSTALL THE BRACKET WITH BOLTS



MONTAJ ŞEMASI / INSTALLATION SCHEME

