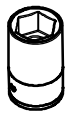


# MAZDA CX-5 2018

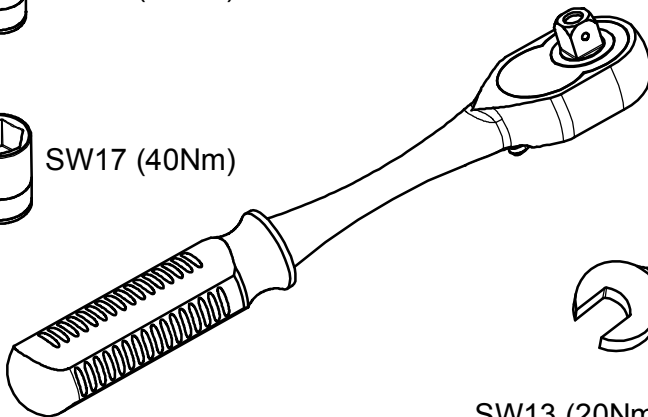
KOD / CODE : 4625BRK183



SW13 (20Nm)

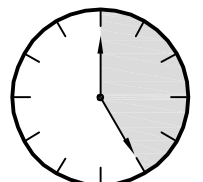
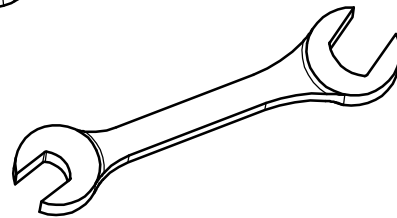


SW17 (40Nm)



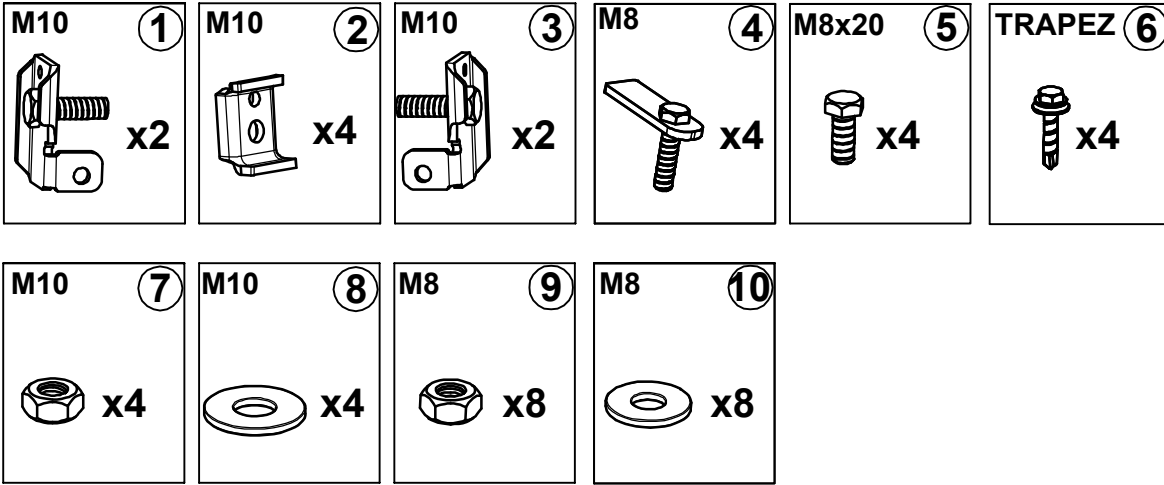
SW13 (20Nm)

SW17 (40Nm)

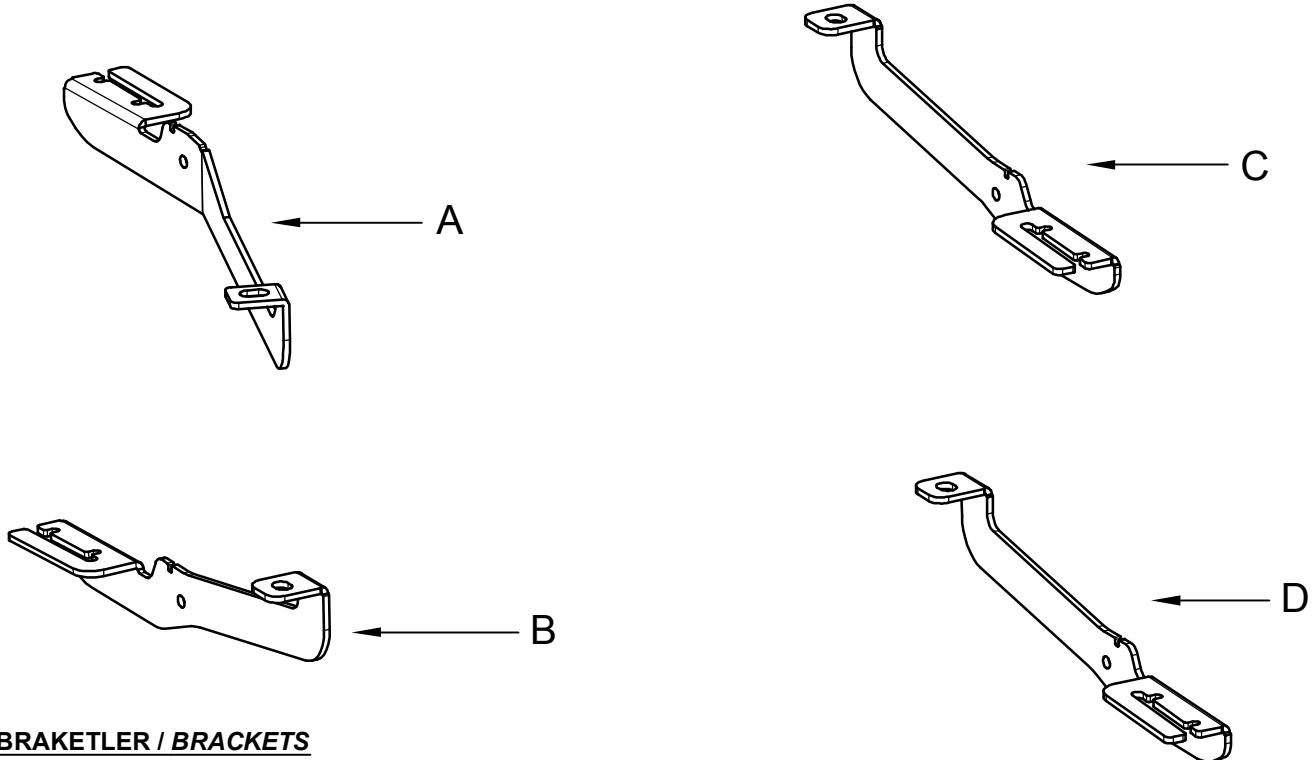


25 DAKİKA

# MONTAJ SETİ / INSTALLATION SET



1. ETEK BAĞLANTI SAĞ / SKIRT RING
2. ETEK SIKMA / SKIRTING
3. ETEK BAĞLANTI SOL / SKIRT RING
4. M10 LAMALI CİVATA / M10 MOUNTING PLATE
5. M8x20 ANAHTAR BAŞLI CİVATA / M8x20 KEY HEAD BOLT
6. TRAPEZ VİDA / TRAPEZE SCREW
7. M10 SOMUN / M10 NUT
8. M10 PUL / M10 WASHER
9. M8 SOMUN / M8 NUT
10. M8 PUL / M8 WASHER



## BRAKETLER / BRACKETS

- A. 4625 BRK R F / SAĞ ÖN BRAKET / RIGHT FRONT BRACKET
- B. 4625 BRK R R / SAĞ ARKA BRAKET / RIGHT REAR BRACKET
- C. 4625 BRK L F / SOL ÖN BRAKET / LEFT FRONT BRACKET
- D. 4625 BRK L R / SOL ARKA BRAKET / LEFT REAR BRACKET

Fig. 1



ARAÇ ÜZERİNDEKİ PLASTİK KAPAĞI SÖKÜNÜZ

LF

PLEASE REMOVE THE STOPPER THAT ALREADY ATTACHED ON THE VEHICLE

Fig. 5



ARAÇ ÜZERİNDEKİ PLASTİK KAPAĞI SÖKÜNÜZ

LR

PLEASE REMOVE THE STOPPER THAT ALREADY ATTACHED ON THE VEHICLE

Fig. 2



4 NUMARALI PARÇAYI YERİNE TAKINIZ

LF

PLEASE ATTACH THE PART (PART NO 4) TO THE PLACE SHOWN ABOVE

Fig. 6



7 NUMARALI PARÇAYI YERİNE TAKINIZ

LR

PLEASE ATTACH THE PART (PART NO 7) TO THE PLACE SHOWN ABOVE

Fig. 3



BRAKETİ CİVATALAR İLE MONTAJLAYINIZ

LF

INSTALL THE BRACKET WITH BOLTS

Fig. 7

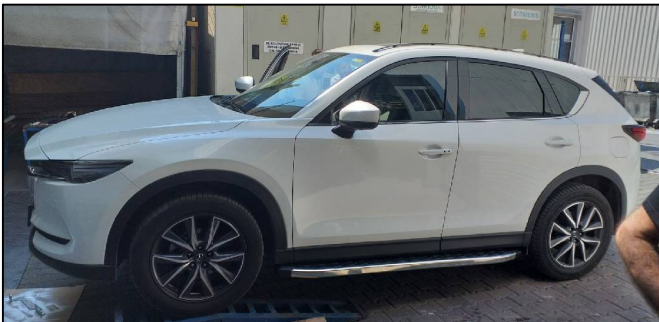


BRAKETİ CİVATALAR İLE MONTAJLAYINIZ

LR

INSTALL THE BRACKET WITH BOLTS

Fig. 4



ÜRÜNÜ MONTAJLAYINIZ

LF

PLEASE INSTALL THE PRODUCT

Fig. 8



ÜRÜNÜ MONTAJLAYINIZ

LR

PLEASE INSTALL THE PRODUCT



## MONTAJ ŞEMASI / INSTALLATION SCHEME

