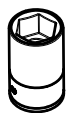


HYUNDAI TUCSON 2015>

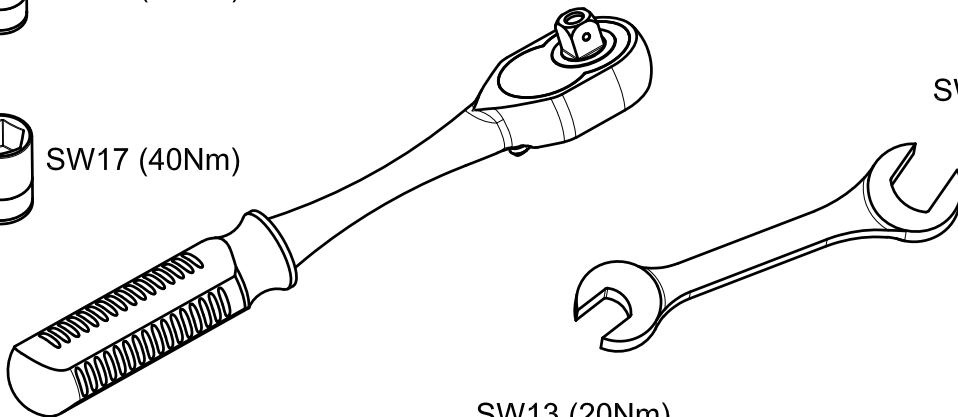
KOD / CODE : 3224BRK173



SW13 (20Nm)

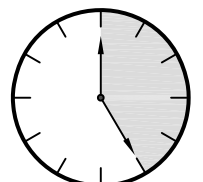


SW17 (40Nm)



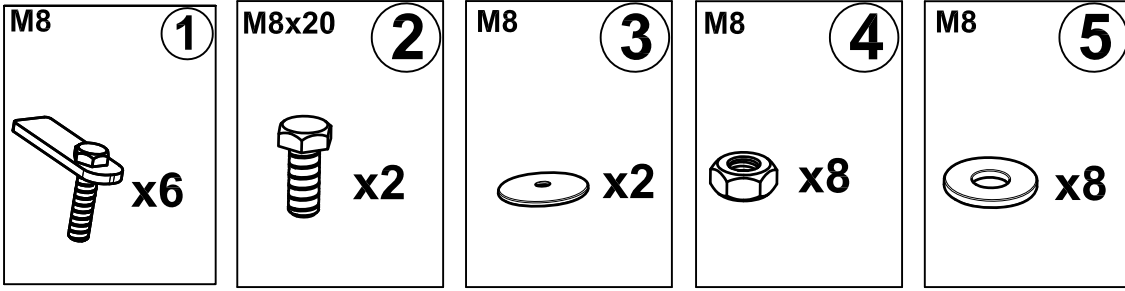
SW17 (40Nm)

SW13 (20Nm)



25 DAKIKA

MONTAJ SETİ / INSTALLATION SET



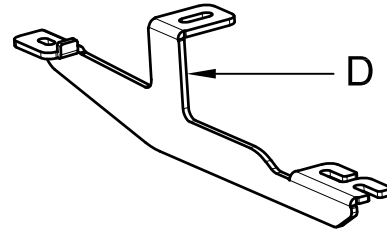
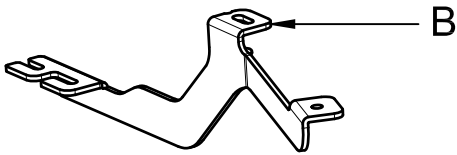
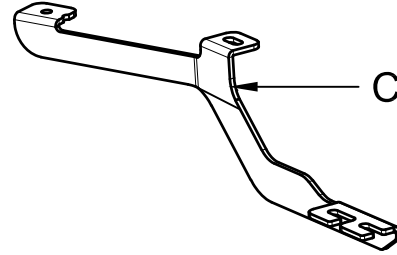
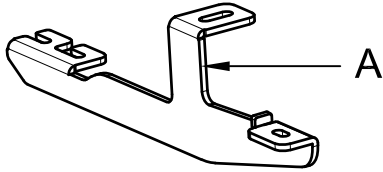
1. M8 LAMALI CİVATA / M10 MOUNTING PLATE

2. M8x20 ANAHTAR BAŞLI CİVATA / M8x20 KEY HEAD BOLT

3. M8 YALITIM PULU / M10 WASHER

4. M8 SOMUN / M8 NUT

5. M8 PUL / M8 WASHER



BRAKETLER / BRACKETS

A. 3224BRK R F / SAĞ ÖN BRAKET / RIGHT FRONT BRACKET

B. 3224BRK R R / SAĞ ARKA BRAKET / RIGHT REAR BRACKET

C. 3224BRK L F / SOL ÖN BRAKET / LEFT FRONT BRACKET

D. 3224BRK L R / SOL ARKA BRAKET / LEFT REAR BRACKET

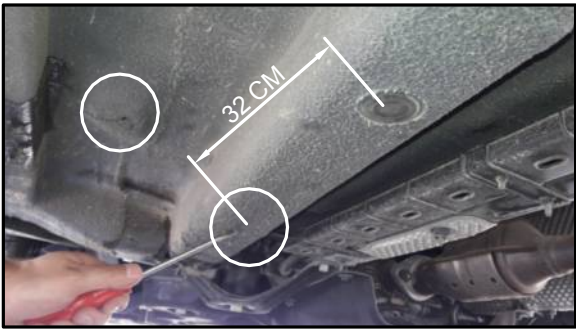


Fig. 1

ARAÇ ÜZERİNDEKİ TAPANIN YERİDİR
(KORUYUCU KATMAN İLE KAPLANMIŞTIR ÇIPLAK GÖZ İLE
GÖRÜNMEMEKTEDİR)
PLEASE REMOVE THE STOPPER THAT ALREADY ATTACHED
ON THE VEHICLE

LF

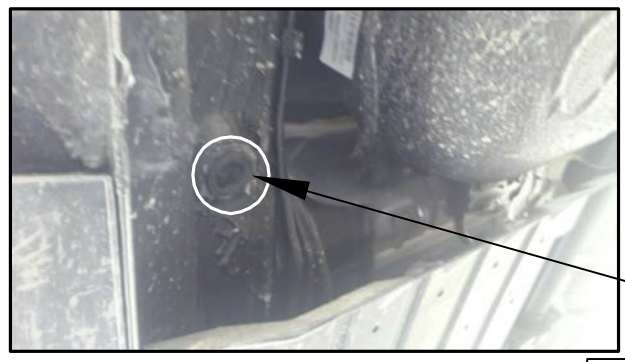


Fig. 5

ARAÇ ÜZERİNDEKİ PLASTİK KAPAĞI SÖKÜNÜZ
PLEASE REMOVE THE STOPPER THAT
ALREADY ATTACHED ON THE VEHICLE



LR



Fig. 2

ARAÇ ÜZERİNDEKİ PLASTİK KAPAĞI SÖKÜNÜZ
PLEASE REMOVE THE STOPPER THAT
ALREADY ATTACHED ON THE VEHICLE



LF

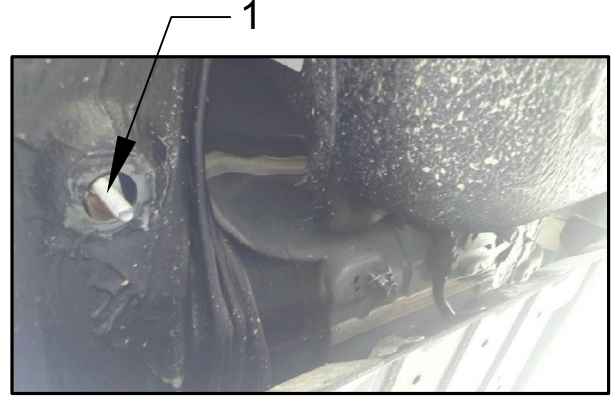


Fig. 6

1 NUMARALI PARÇAYI YERİNE TAKINIZ
PLEASE ATTACH THE PART (PART NO 1)
TO THE PLACE SHOWN ABOVE

LR



Fig. 3

1 NUMARALI PARÇAYI YERİNE TAKINIZ
PLEASE ATTACH THE PART (PART NO 1)
TO THE PLACE SHOWN ABOVE

LF

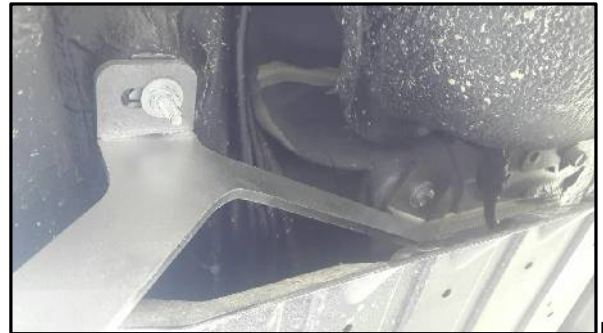


Fig. 7

1 NUMARALI PARÇAYI YERİNE TAKINIZ
PLEASE ATTACH THE PART (PART NO 1)
TO THE PLACE SHOWN ABOVE

LR



Fig. 4

BRAKETİ CİVATALAR İLE MONTAJLAYINIZ
INSTALL THE BRACKET WITH BOLTS

LF

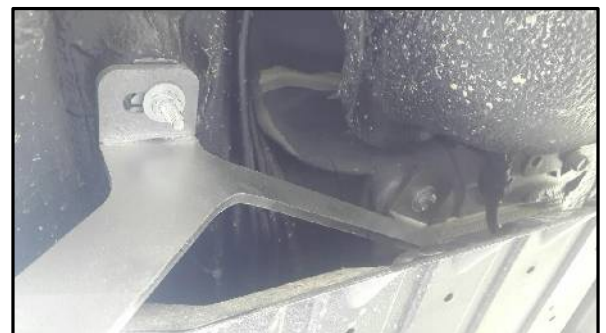


Fig. 8

BRAKETİ CİVATALAR İLE MONTAJLAYINIZ
INSTALL THE BRACKET WITH BOLTS

LR



MONTAJ ŞEMASI / INSTALLATION SCHEME

