

FORD KUGA 2008-2012

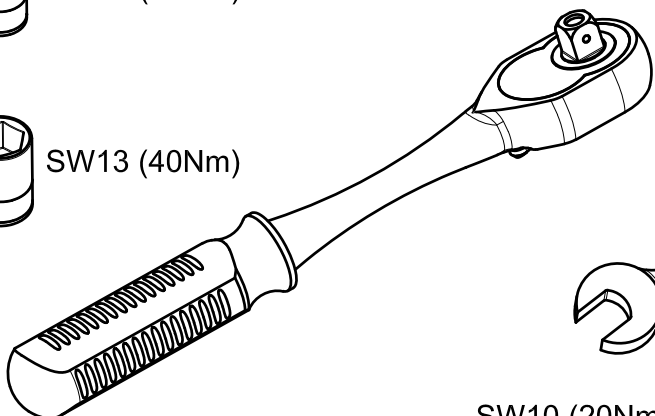
KOD / CODE : 2612BRK183



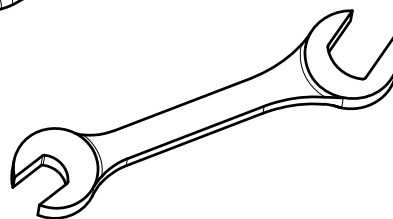
SW10 (20Nm)



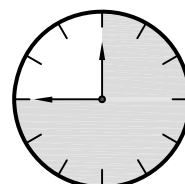
SW13 (40Nm)



SW13 (40Nm)

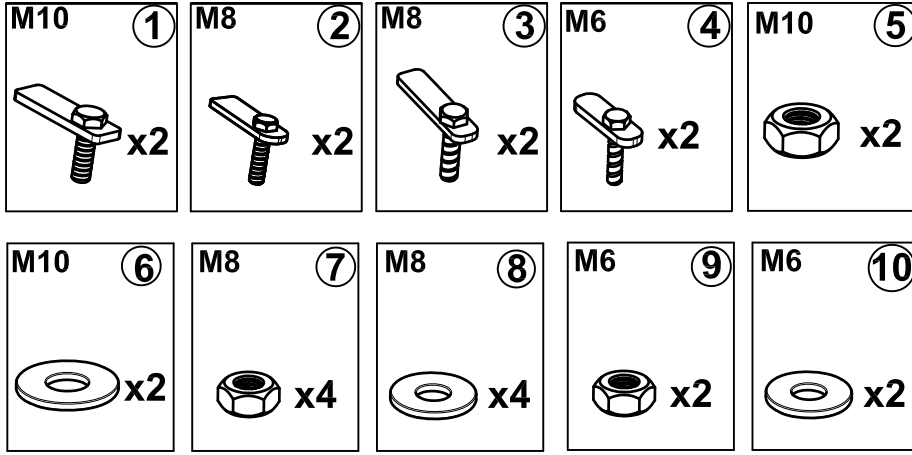


SW10 (20Nm)

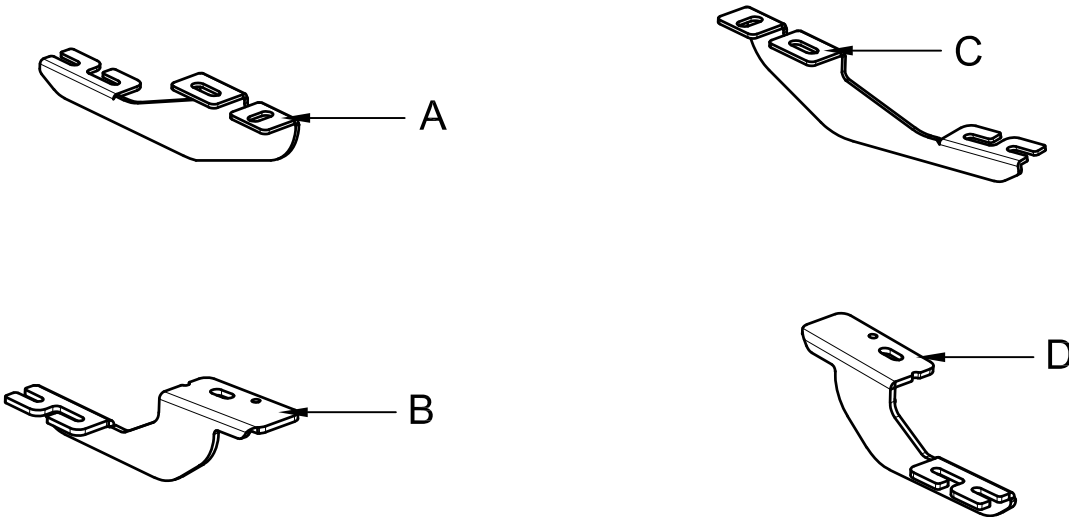


45 Min.

MONTAJ SETİ / INSTALLATION SET



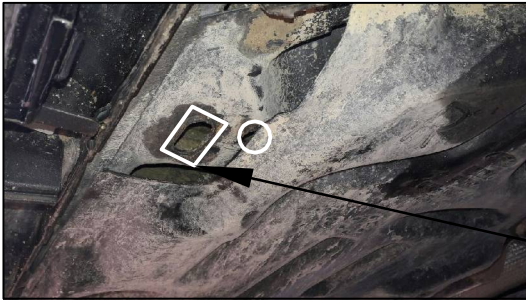
1. M10 LAMALI CİVATA / M10 MOUNTING PLATE
2. M8 LAMALI CİVATA / M8 MOUNTING PLATE
3. M8 LAMALI CİVATA / M8 MOUNTING PLATE
4. M6 LAMALI CİVATA / M6 MOUNTING PLATE
5. M10 SOMUN / M10 NUT
6. M10 PUL / M10 WASHER
7. M8 SOMUN / M8 NUT
8. M8 PUL / M8 WASHER
9. M6 SOMUN / M6 NUT
10. M6 PUL / M6 WASHER



BRAKETLER / BRACKETS

- A. 2612BRK R F / SAĞ ÖN BRAKET / RIGHT FRONT BRACKET
- B. 2612BRK R R / SAĞ ARKA BRAKET / RIGHT REAR BRACKET
- C. 2612BRK L F / SOL ÖN BRAKET / LEFT FRONT BRACKET
- D. 2612BRK L R / SOL ARKA BRAKET / LEFT REAR BRACKET

Fig. 1



ARAÇ ÜZERİNDEKİ PLASTİK KAPAĞI SÖKÜNÜZ

PLEASE REMOVE THE STOPPER THAT
ALREADY ATTACHED ON THE VEHICLE



RF

Fig. 5



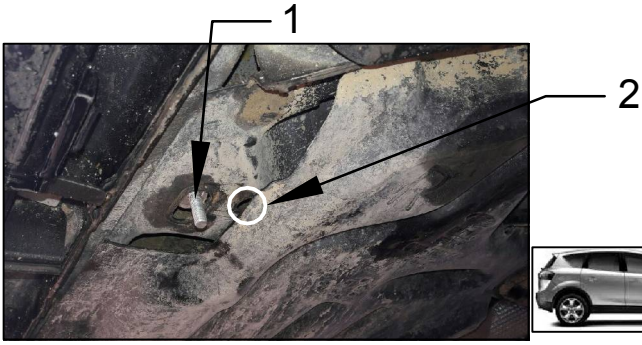
ARAÇ ÜZERİNDEKİ PLASTİK KAPAĞI SÖKÜNÜZ

PLEASE REMOVE THE STOPPER THAT
ALREADY ATTACHED ON THE VEHICLE



RR

Fig. 2

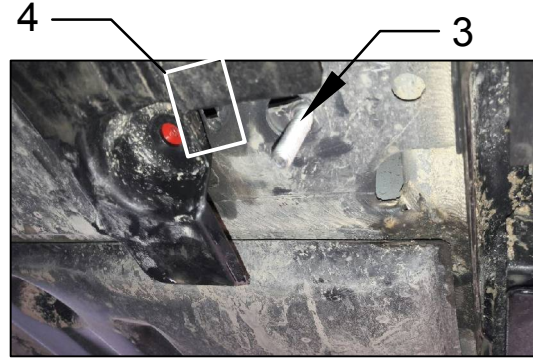


1 ve 2 NUMARALI PARÇAYI YERİNE TAKINIZ
PLEASE ATTACH THE PART (PART NO 1-2)
TO THE PLACE SHOWN ABOVE



RF

Fig. 6



3 ve 4 NUMARALI PARÇAYI YERİNE TAKINIZ
PLEASE ATTACH THE PART (PART NO 3-4)
TO THE PLACE SHOWN ABOVE



RR

Fig. 3



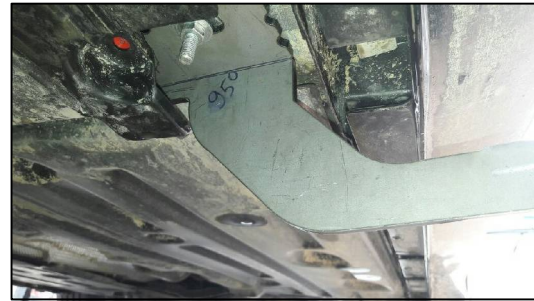
BRAKETİ CİVATALAR İLE MONTAJLAYINIZ

INSTALL THE BRACKET WITH BOLTS



RF

Fig. 7



BRAKETİ CİVATALAR İLE MONTAJLAYINIZ

INSTALL THE BRACKET WITH BOLTS



RR

Fig. 4



BRAKETİ CİVATALAR İLE MONTAJLAYINIZ

INSTALL THE BRACKET WITH BOLTS

Fig. 8



ÜRÜNÜ MONTAJLAYINIZ

PLEASE INSTALL THE PRODUCT



MONTAJ ŞEMASI / INSTALLATION SCHEME

