

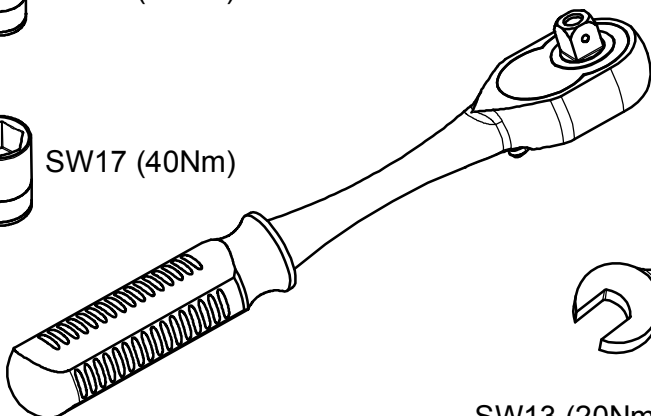
# FREEMONT 2013> JOURNEY 2013> 2528BRK



SW13 (20Nm)

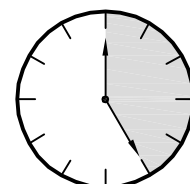
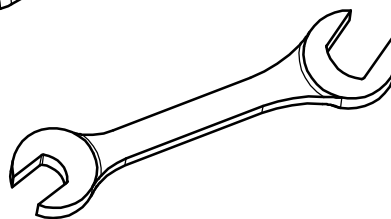


SW17 (40Nm)



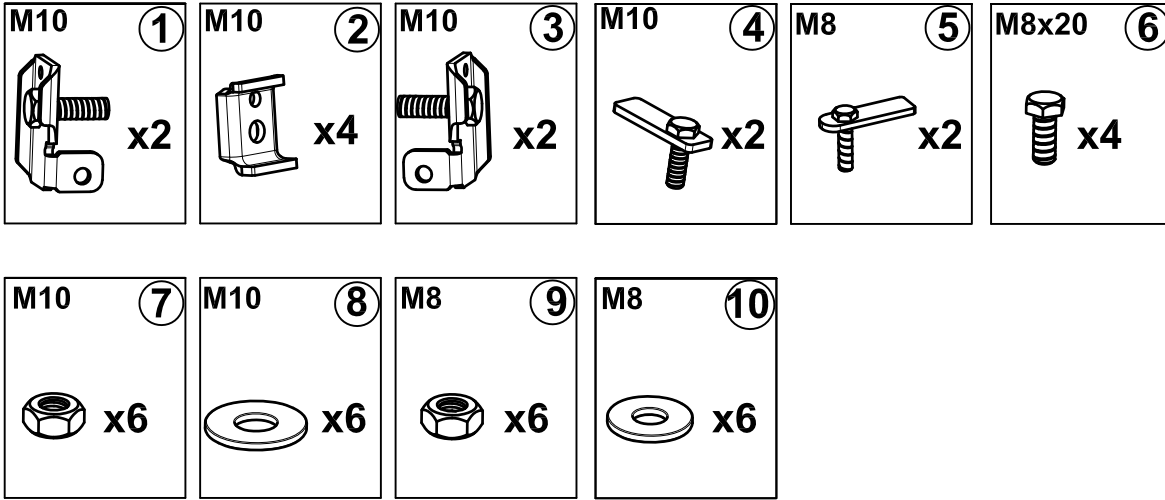
SW13 (20Nm)

SW17 (40Nm)

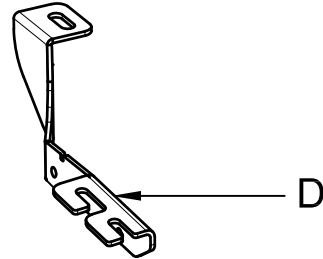
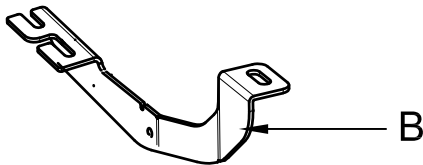
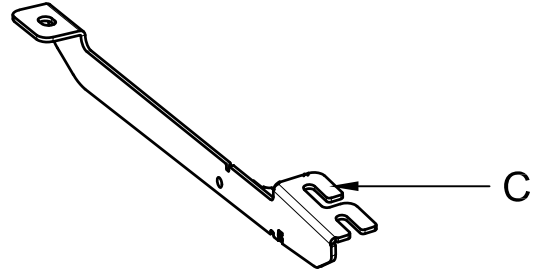
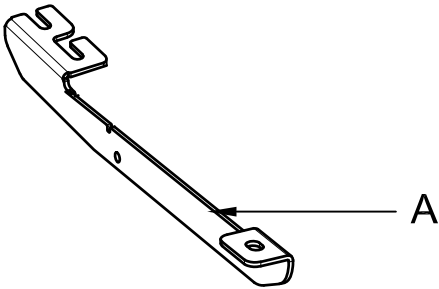


25 DAKİKA

# MONTAJ SETİ / INSTALLATION SET



1. ETEK BAĞLANTI SAĞ / SKIRT RING
2. ETEK SIKMA / SKIRTING
3. ETEK BAĞLANTI SOL / SKIRT RING
4. M10 LAMALI CİVATA / M10 MOUNTING PLATE
4. M8 LAMALI CİVATA / M8 MOUNTING PLATE
5. M8x20 ANAHTAR BAŞLI CİVATA / M8x20 KEY HEAD BOLT
6. M10 SOMUN / M10 NUT
7. M10 PUL / M10 WASHER
8. M8 SOMUN / M8 NUT
9. M8 PUL / M8 WASHER



## **BRAKETLER / BRACKETS**

- A. 2528BRK R F / SAĞ ÖN BRAKET / RIGHT FRONT BRACKET
- B. 2528BRK R R / SAĞ ARKA BRAKET / RIGHT REAR BRACKET
- C. 2528BRK L F / SOL ÖN BRAKET / LEFT FRONT BRACKET
- D. 2528BRK L R / SOL ARKA BRAKET / LEFT REAR BRACKET

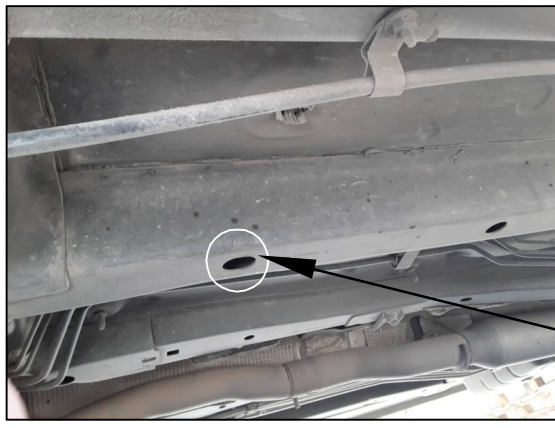


Fig. 1



RF



ARAÇ ÜZERİNDEKİ PLASTİK KAPAĞI SÖKÜNÜZ  
PLEASE REMOVE THE STOPPER THAT ALREADY  
ATTACHED ON THE VEHICLE

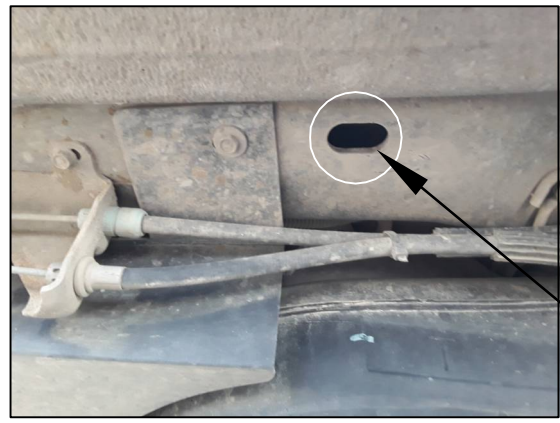


Fig. 5



RR



ARAÇ ÜZERİNDEKİ PLASTİK KAPAĞI SÖKÜNÜZ  
PLEASE REMOVE THE STOPPER THAT ALREADY  
ATTACHED ON THE VEHICLE



Fig. 2



RF

4

4 NUMARALI PARÇAYI YERİNE TAKINIZ  
PLEASE ATTACH THE PART (PART NO 4)  
TO THE PLACE SHOWN ABOVE



Fig. 6



RR

5

5 NUMARALI PARÇAYI YERİNE TAKINIZ  
PLEASE ATTACH THE PART (PART NO 5)  
TO THE PLACE SHOWN ABOVE



Fig. 3



RF

BRAKETİ CİVATALAR İLE MONTAJLAYINIZ  
INSTALL THE BRACKET WITH BOLTS



Fig. 7



RR

BRAKETİ CİVATALAR İLE MONTAJLAYINIZ  
INSTALL THE BRACKET WITH BOLTS



Fig. 4



RF

BRAKETİ CİVATALAR İLE MONTAJLAYINIZ  
INSTALL THE BRACKET WITH BOLTS



Fig. 8



RR

ÜRÜNÜ MONTAJLAYINIZ  
PLEASE INSTALL THE PRODUCT



## MONTAJ ŞEMASI / INSTALLATION SCHEME

