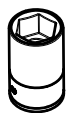


DOBLO 2010>

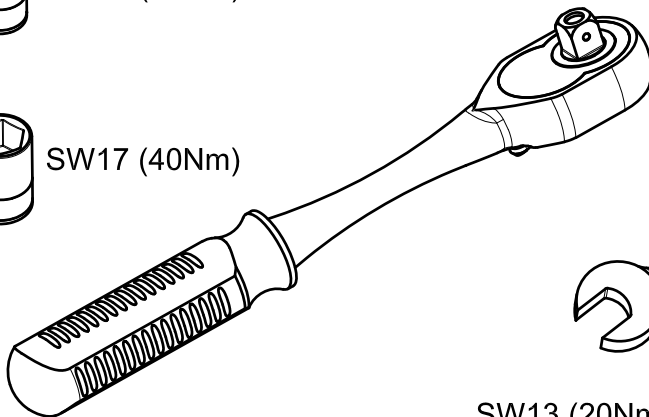
COMBO 2010>



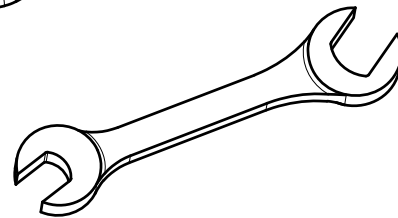
SW13 (20Nm)



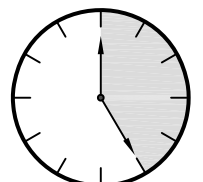
SW17 (40Nm)



SW17 (40Nm)

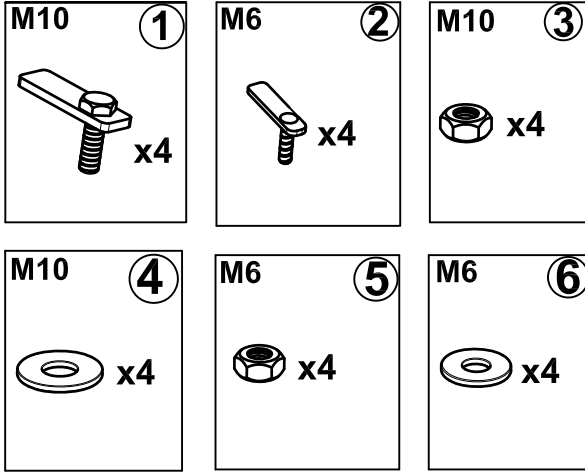


SW13 (20Nm)

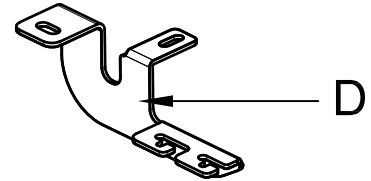
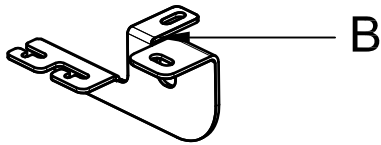
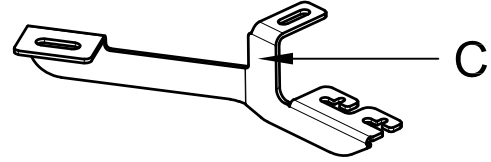
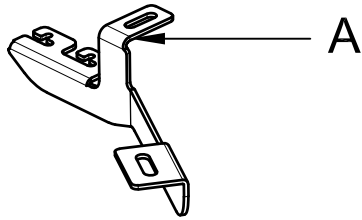


25 DAKIKA

MONTAJ SETİ / INSTALLATION SET



1. M10 LAMALI CİVATA / M10 MOUNTING PLATE
2. M6 LAMALI CİVATA / M6 MOUNTING PLATE
3. M10 SOMUN / M10 NUT
4. M10 PUL / M10 WASHER
5. M6 SOMUN / M8 NUT
6. M6 PUL / M8 WASHER



BRAKETLER / BRACKETS

- A. 2524BRK R F / SAĞ ÖN BRAKET / RIGHT FRONT BRACKET
- B. 2524BRK R R / SAĞ ARKA BRAKET / RIGHT REAR BRACKET
- C. 2524BRK L F / SOL ÖN BRAKET / LEFT FRONT BRACKET
- D. 2524BRK L R / SOL ARKA BRAKET / LEFT REAR BRACKET



1

ARAÇ ÜZERİNDEKİ PLASTİK KAPAĞI SÖKÜNÜZ
PLEASE REMOVE THE STOPPER THAT ALREADY
ATTACHED ON THE VEHICLE



RF



5

ARAÇ ÜZERİNDEKİ PLASTİK KAPAĞI SÖKÜNÜZ
PLEASE REMOVE THE STOPPER THAT ALREADY
ATTACHED ON THE VEHICLE



RR



2

1 NUMARALI PARÇAYI YERİNE TAKINIZ
PLEASE ATTACH THE PART (PART NO 1)
TO THE PLACE SHOWN ABOVE



RF

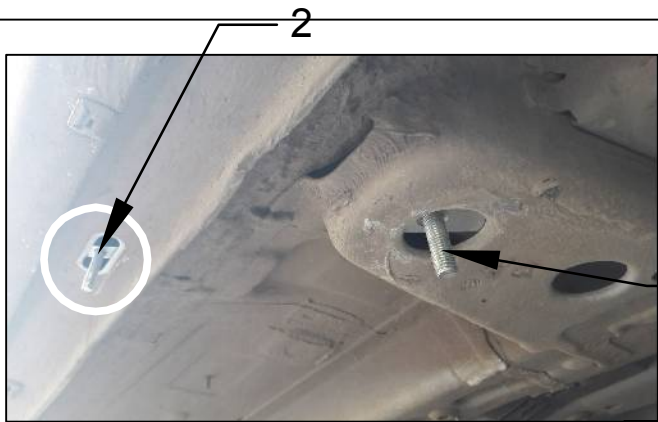


6

1 NUMARALI PARÇAYI YERİNE TAKINIZ
PLEASE ATTACH THE PART (PART NO 1)
TO THE PLACE SHOWN ABOVE



RR



3

2 NUMARALI PARÇAYI YERİNE TAKINIZ
PLEASE ATTACH THE PART (PART NO 2)
TO THE PLACE SHOWN ABOVE



RF



7

2 NUMARALI PARÇAYI YERİNE TAKINIZ
PLEASE ATTACH THE PART (PART NO 2)
TO THE PLACE SHOWN ABOVE



RR



4

BRAKETİ CİVATALAR İLE MONTAJLAYINIZ
INSTALL THE BRACKET WITH BOLTS



RF



8

ÜRÜNÜ MONTAJLAYINIZ
PLEASE INSTALL THE PRODUCT



RR



MONTAJ ŞEMASI / INSTALLATION SCHEME

