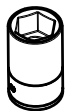


DUCATO 2006>

BOXER 2006>

JUMPER 2006>

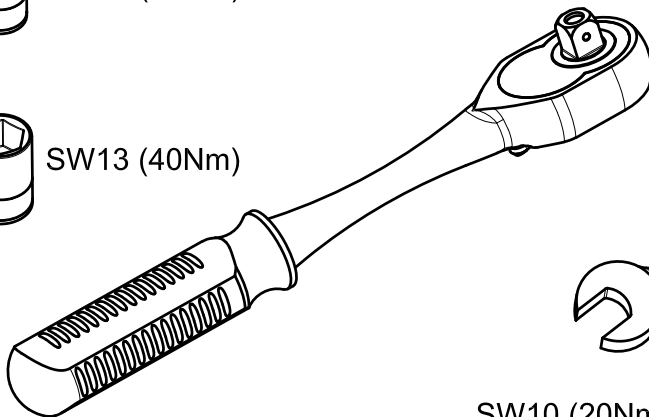
KOD / CODE : 2523BRK313



SW10 (20Nm)

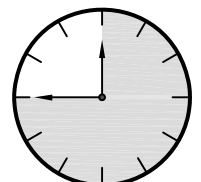
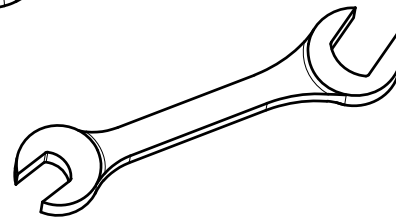


SW13 (40Nm)



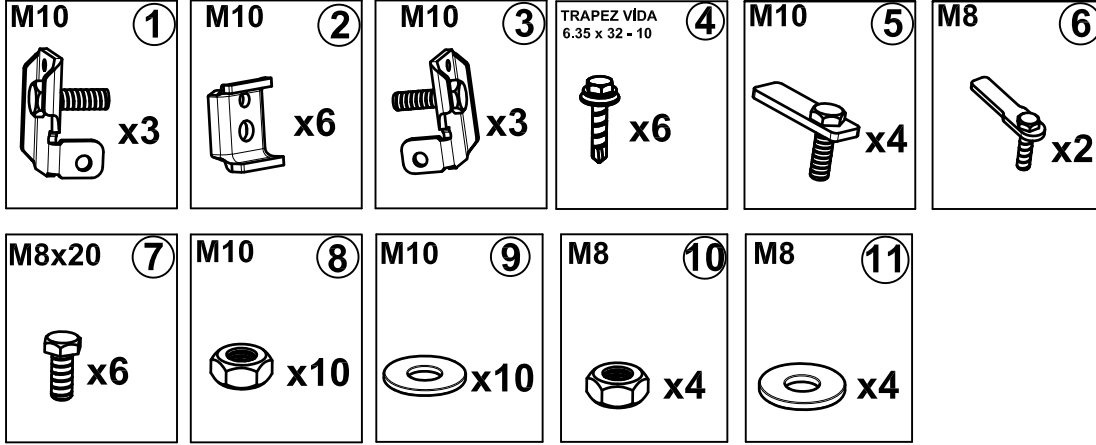
SW10 (20Nm)

SW13 (40Nm)

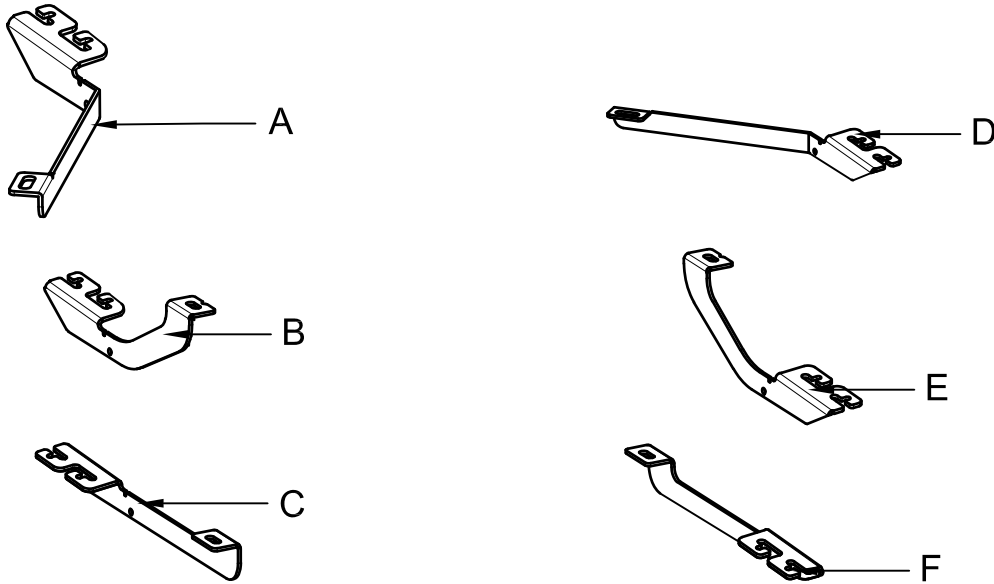


45 Min.

MONTAJ SETİ / INSTALLATION SET



1. ETEK BAĞLANTI SAĞ / SKIRT RING
2. ETEK SIKMA / SKIRTING
3. ETEK BAĞLANTI SOL / SKIRT RING
4. TRAPEZ VİDA / TRAPEZ SCREW
5. M10 LAMALI CİVATA / M10 MOUNTING PLATE
6. M8 LAMALI CİVATA / M8 MOUNTING PLATE
7. M8x20 ANAHTAR BAŞLI CİVATA / M8x20 KEY HEAD BOLT
8. M10 SOMUN / M10 NUT
9. M10 PUL / M10 WASHER
10. M8 SOMUN / M8 NUT
11. M8 PUL / M8 WASHER



BRAKETLER / BRACKETS

- A. 2523BRK R F / SAĞ ÖN BRAKET / RIGHT FRONT BRACKET
- B. 2523BRK R M / SAĞ ORTA BRAKET / RIGHT MIDDLE BRACKET
- C. 2523BRK R R / SAĞ ARKA BRAKET / RIGHT REAR BRACKET
- D. 2523BRK L F / SOL ÖN BRAKET / LEFT FRONT BRACKET
- E. 2523BRK L M / SOL ORTA BRAKET / LEFT MIDDLE BRACKET
- F. 2523BRK L R / SOL ARKA BRAKET / LEFT REAR BRACKET

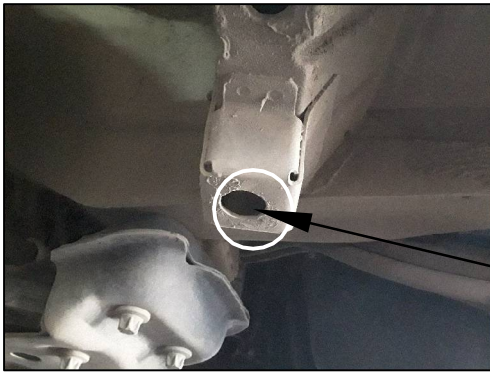


Fig. 1



LF



ARAÇ ÜZERİNDEKİ PLASTİK KAPAĞI SÖKÜNÜZ

PLEASE REMOVE THE STOPPER THAT ALREADY ATTACHED ON THE VEHICLE

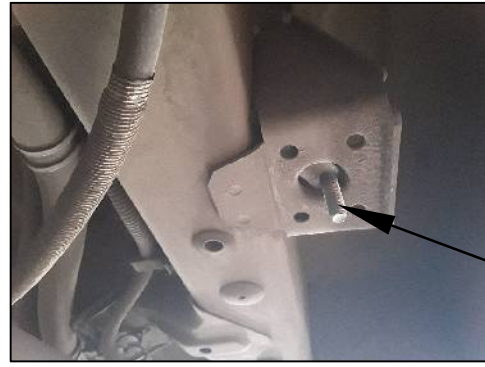
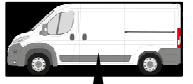


Fig. 5



LM

5

5 NUMARALI PARÇAYI YERİNE TAKINIZ

PLEASE ATTACH THE PART (PART NO 5) TO THE PLACE SHOWN ABOVE



Fig. 2



LF

5

5 NUMARALI PARÇAYI YERİNE TAKINIZ

PLEASE ATTACH THE PART (PART NO 5) TO THE PLACE SHOWN ABOVE



Fig. 6



LM

BRAKETİ CİVATALAR İLE MONTAJLAYINIZ

INSTALL THE BRACKET WITH BOLTS



Fig. 3



LF

BRAKETİ CİVATALAR İLE MONTAJLAYINIZ

INSTALL THE BRACKET WITH BOLTS



Fig. 7



LR

6

6 NUMARALI PARÇAYI YERİNE TAKINIZ

PLEASE ATTACH THE PART (PART NO 6) TO THE PLACE SHOWN ABOVE

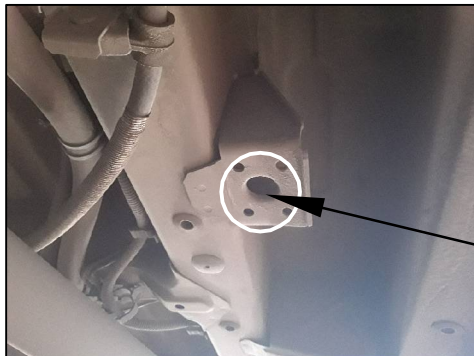


Fig. 4



LM



ARAÇ ÜZERİNDEKİ PLASTİK KAPAĞI SÖKÜNÜZ

PLEASE REMOVE THE STOPPER THAT ALREADY ATTACHED ON THE VEHICLE



Fig. 8



LR

BRAKETİ CİVATALAR İLE MONTAJLAYINIZ

INSTALL THE BRACKET WITH BOLTS



MONTAJ ŞEMASI / INSTALLATION SCHEME

