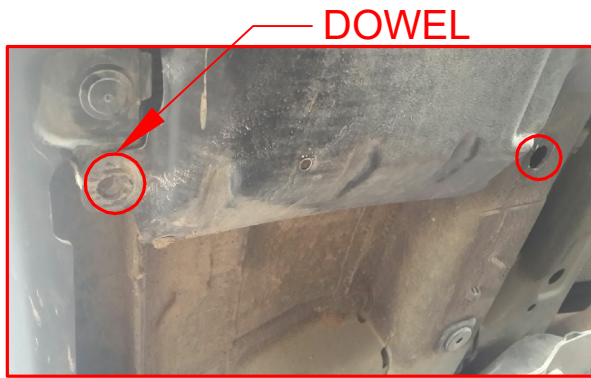


# JEEP RENEGADE 2014> SIDE STEP INSTALLATION SCHEME

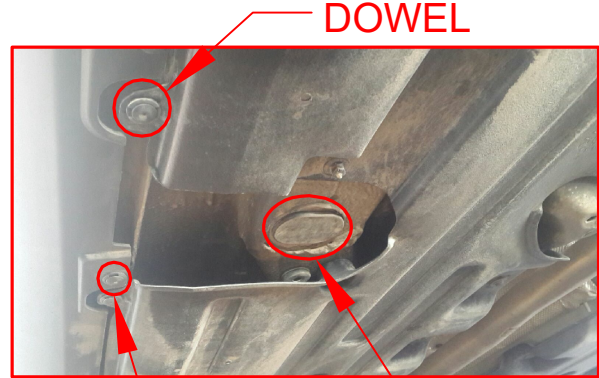
## LEFT FRONT BRACKET INSTALLING STEPS

## LEFT REAR BRACKET INSTALLING STEPS



1

PLEASE REMOVE THE STOPPER THAT ALREADY ATTACHED ON THE VEHICLE.



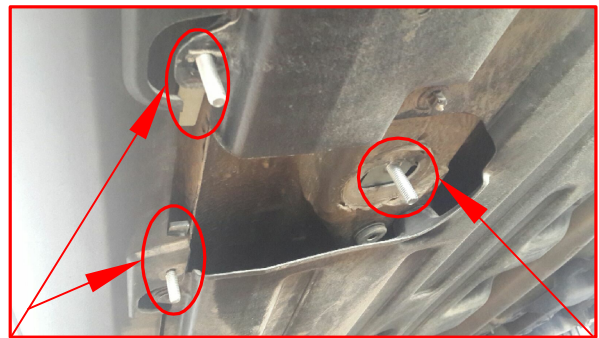
1

PLEASE REMOVE THE STOPPER THAT ALREADY ATTACHED ON THE VEHICLE.



2

PLEASE ATTACH THE PART (PART NO 2,3)  
TO THE PLACE SHOWN ABOVE



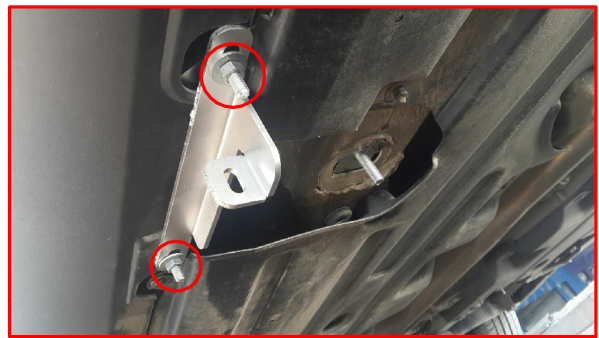
2

PLEASE ATTACH THE PART (PART NO 1,2) TO  
THE PLACE SHOWN ABOVE



3

INSTALL THE BRACKET WITH BOLTS



3

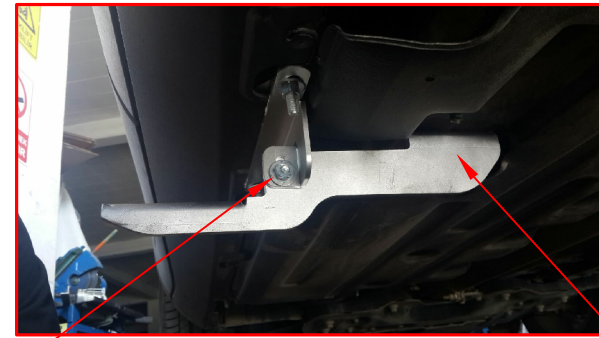
INSTALL BRACKET AND THE ADDITIONAL PART AS SHOWN  
ON PICTURE



4

LEFT FRONT BRACKET      LEFT REAR BRACKET

PLEASE INSTALL THE PRODUCT.



4

INSTALL THE BRACKET WITH BOLTS

**BRAND: JEEP**


**MODEL: RENAGADE**


**PRODUCT : SIDE STEP**


**PR. MODEL: BRACKET**


**CODE: 1708BRK164**


### INSTALLATION SET

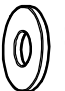
**1**  
M10 COTTER  
BOLT  
80x40x4-30  
CODE:LMC005  
  
PCS.: 2


**2**  
M8 COTTER  
BOLT  
67X14x4-13.5  
CODE:LMC044  
  
PCS.: 6


**3**  
M8 COTTER  
BOLT  
CODE:LMC033  
67X17x4-12.5  
  
PCS.: 2


**4**  
WRENCH BOLT  
HEAD  
M8 x 20  
  
PCS.: 2

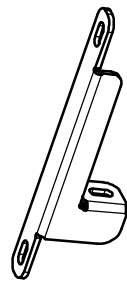
**5**  
NUTS  
M8  
  
PCS.: 18

**6**  
WASHER  
M8  
  
PCS.: 18

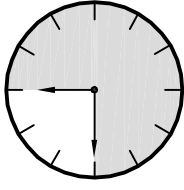
**7**  
NUTS  
M10  
  
PCS.: 2

**8**  
WASHER  
M10  
  
PCS.: 2

**9**  
BRACKET  
RIGHT-R  
  
PCS.: 1

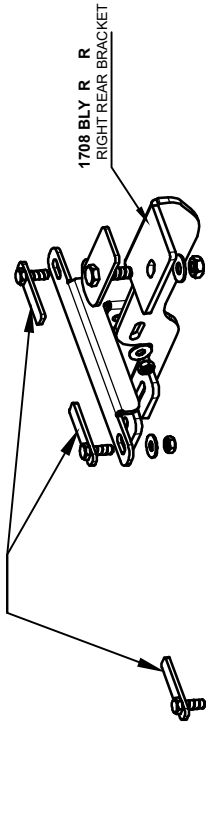
**10**  
BRACKET  
LEFT-L  
  
PCS.: 1

## INSTALLATION SCHEME

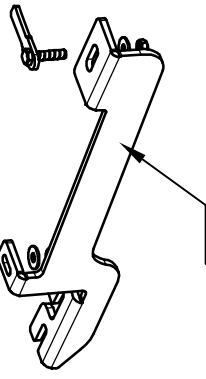


45 MINUTE

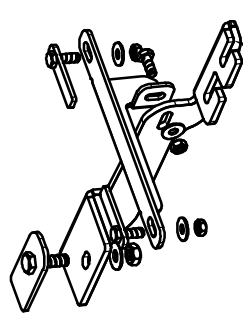
INSTALL BRACKET AND THE ADDITIONAL PART AS SHOWN ON PICTURE



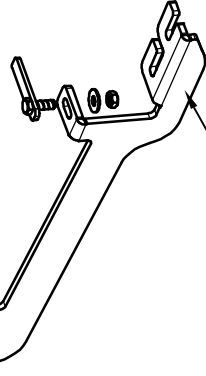
1708 BLY R R  
RIGHT REAR BRACKET



1708 BLY R F  
RIGHT FRONT BRACKET



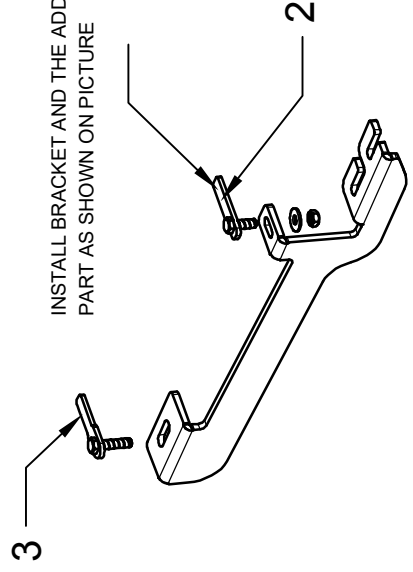
LEFT REAR BRACKET  
1708 BLY L R



LEFT FRONT BRACKET  
1708 BLY L F

### LEFT FRONT BRACKET

INSTALL BRACKET AND THE ADDITIONAL PART AS SHOWN ON PICTURE



### LEFT REAR BRACKET

INSTALL BRACKET AND THE ADDITIONAL PART AS SHOWN ON PICTURE

