

AUDI X-3 2010>

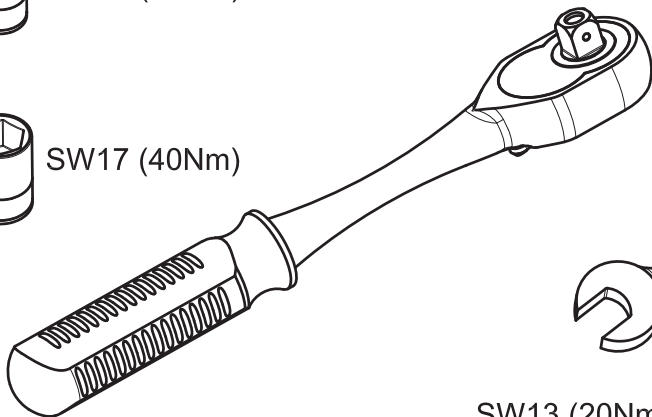
KOD / CODE : 1210BRK193



SW13 (20Nm)

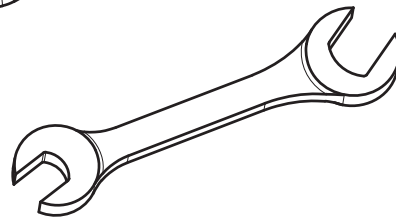


SW17 (40Nm)



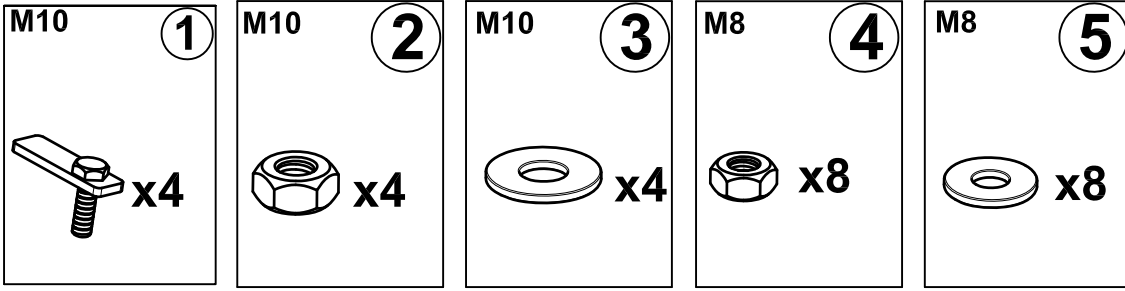
SW13 (20Nm)

SW17 (40Nm)

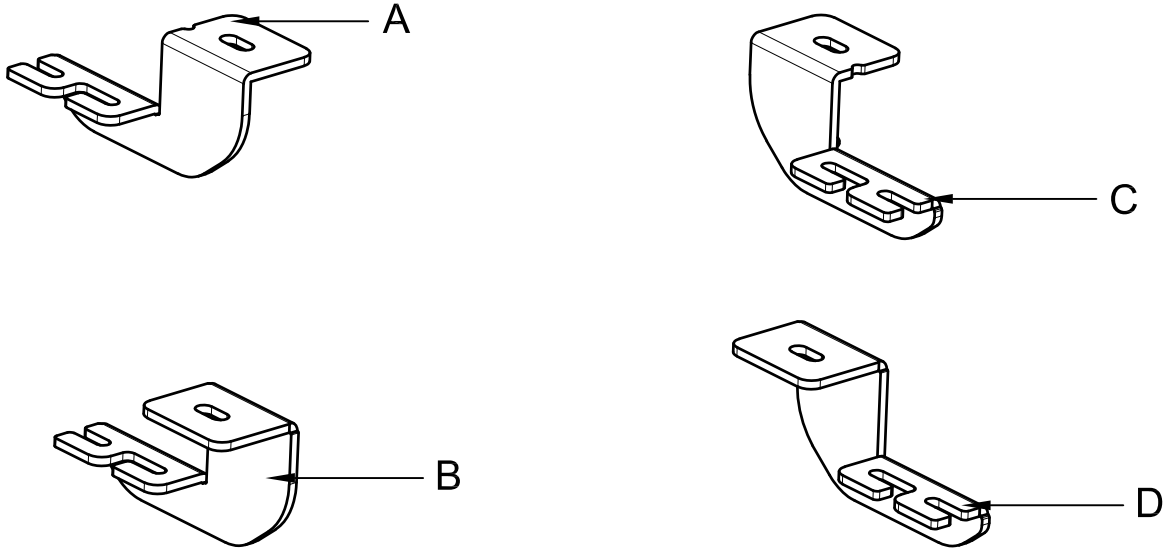


25 DAKIKA

MONTAJ SETİ / INSTALLATION SET



1. M10 LAMALI CİVATA / M10 MOUNTING PLATE
2. M10 SOMUN / M10 NUT
3. M10 PUL / M10 WASHER
4. M8 SOMUN / M8 NUT
5. M8 PUL / M8 WASHER



BRAKETLER / BRACKETS

- A. 1210BRK R F / SAĞ ÖN BRAKET / RIGHT FRONT BRACKET
- B. 1210BRK R R / SAĞ ARKA BRAKET / RIGHT REAR BRACKET
- C. 1210BRK L F / SOL ÖN BRAKET / LEFT FRONT BRACKET
- D. 1210BRK L R / SOL ARKA BRAKET / LEFT REAR BRACKET



Fig. 1



LF

ARAÇ ÜZERİNDEKİ TAPAYI SÖKÜNÜZ
PLEASE REMOVE THE STOPPER THAT ALREADY
ATTACHED ON THE VEHICLE



Fig. 5



LR

ARAÇ ÜZERİNDEKİ TAPAYI SÖKÜNÜZ
PLEASE REMOVE THE STOPPER THAT ALREADY
ATTACHED ON THE VEHICLE

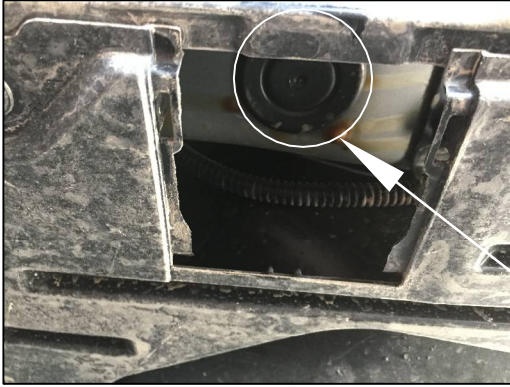


Fig. 2



LF



ARAÇ ÜZERİNDEKİ TAPAYI SÖKÜNÜZ

PLEASE REMOVE THE STOPPER THAT ALREADY
ATTACHED ON THE VEHICLE

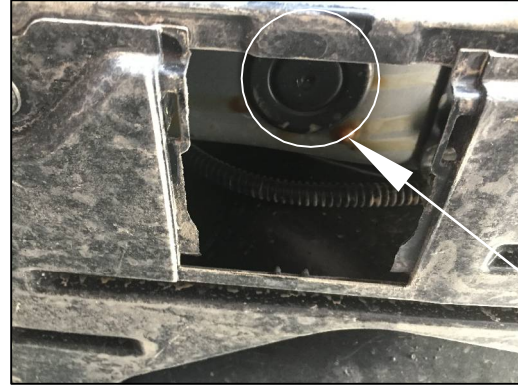


Fig. 6



LR



ARAÇ ÜZERİNDEKİ TAPAYI SÖKÜNÜZ

PLEASE REMOVE THE STOPPER THAT ALREADY
ATTACHED ON THE VEHICLE

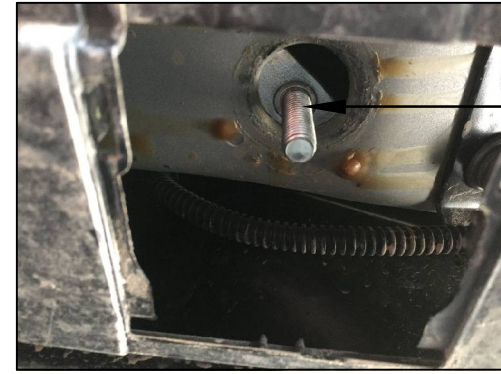


Fig. 3



LF

1 NUMARALI PARÇAYI YERİNE TAKINIZ

PLEASE ATTACH THE PART (PART NO 1) TO THE PLACE
SHOWN ABOVE

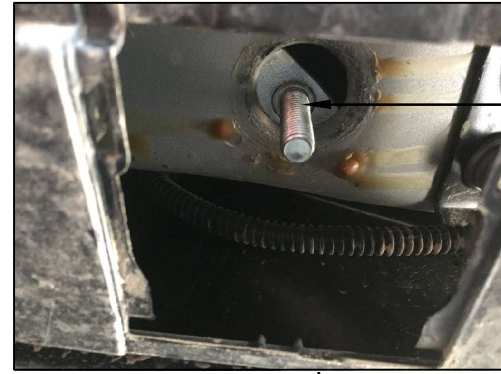


Fig. 7



LR

1 NUMARALI PARÇAYI YERİNE TAKINIZ

PLEASE ATTACH THE PART (PART NO 1) TO THE PLACE
SHOWN ABOVE



Fig. 4



LF

BRAKETİ CİVATALAR İLE MONTAJLAYINIZ
INSTALL THE BRACKET WITH BOLTS



Fig. 8



LR

BRAKETİ CİVATALAR İLE MONTAJLAYINIZ
INSTALL THE BRACKET WITH BOLTS



MONTAJ ŞEMASI / INSTALLATION SCHEME

